

PALACE

RESIDENCES - NORTH

AT DUBAI CREEK HARBOUR

FLOOR PLANS



EMAAR

PALACE

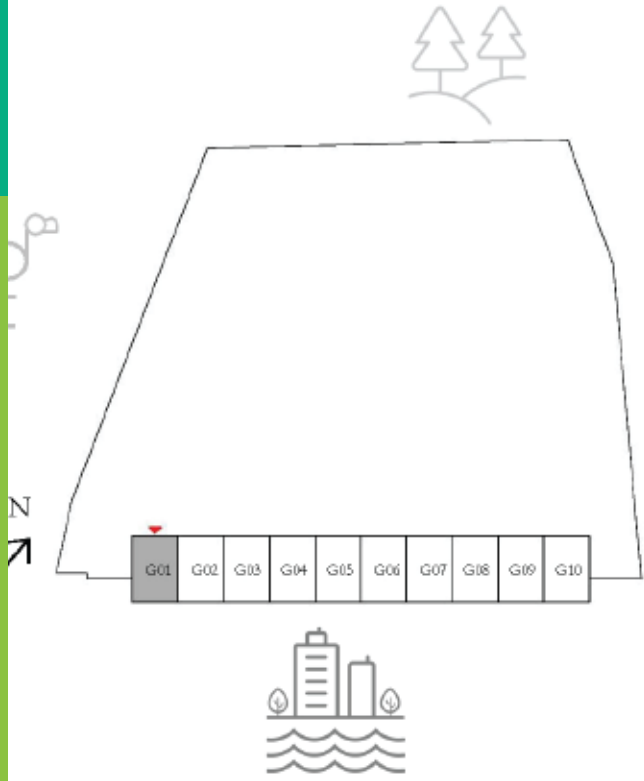
RESIDENCES - NORTH

TOWNHOUSES 3 BEDROOM

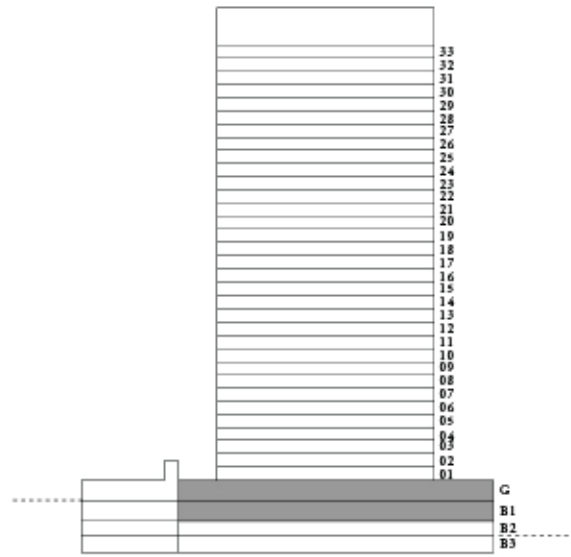
UNIT G01 | GROUND LEVEL

SUITE AREA	1826.42 SQ.FT.	169.68 SQ.M.
BALCONY AREA	97.09 SQ.FT.	9.02 SQ.M.
TOTAL AREA	1923.51 SQ.FT.	178.7 SQ.M.

KEY PLAN



KEY SECTION



UPPER LEVEL



LOWER LEVEL

DISCLAIMER: 1. All dimensions are in imperial and metric, and measured from finish to finish excluding construction tolerances. 2. All materials, dimensions, and drawings are approximate only. 3. Information is subject to change without notice, at the developer's absolute discretion. 4. Actual area may vary from the stated area. 5. Drawings not to scale. 6. All images used are for illustrative purposes only and do not represent the actual size, features, specifications, fittings, and furnishings. The developer reserves the right to make revisions / alterations, at its absolute discretion, without any liability whatsoever.

PALACE

RESIDENCES - NORTH

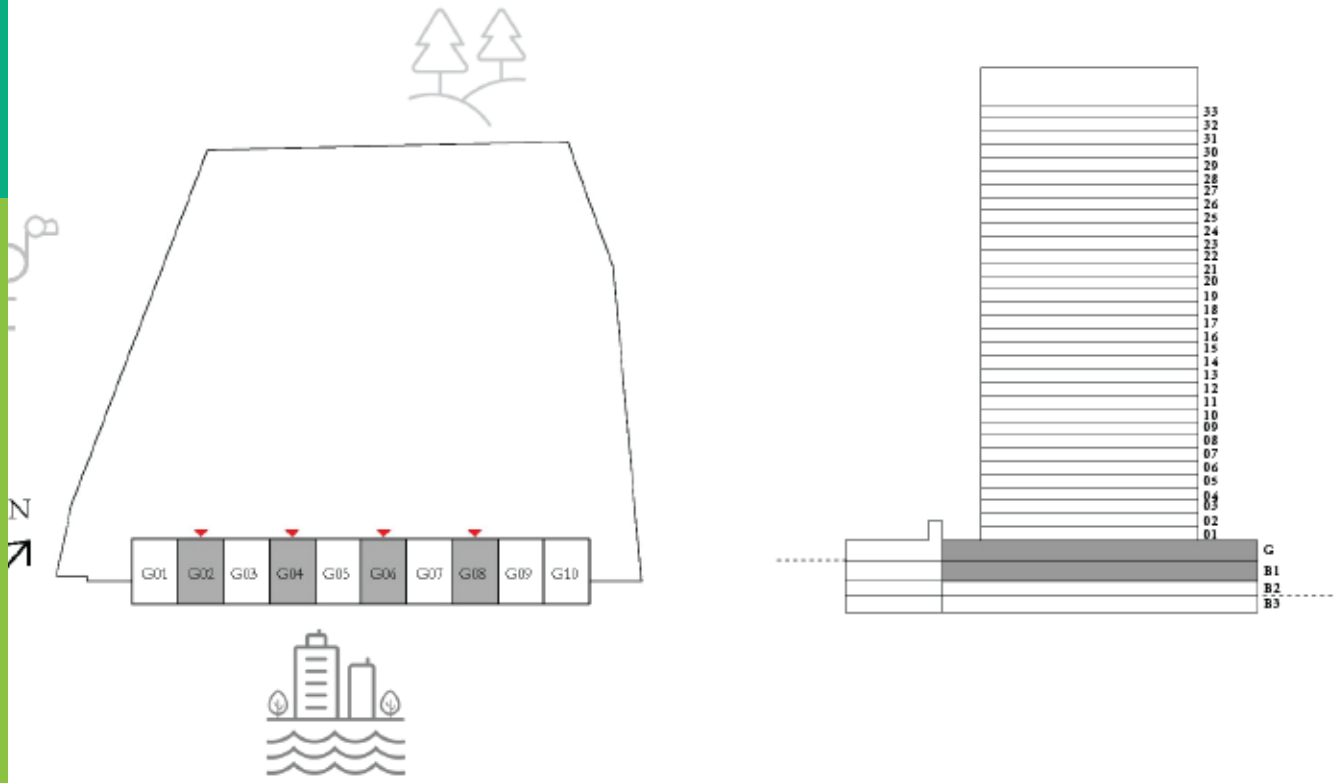
TOWNHOUSES 3 BEDROOM

UNIT G02, G04, G06, G08 | GROUND LEVEL

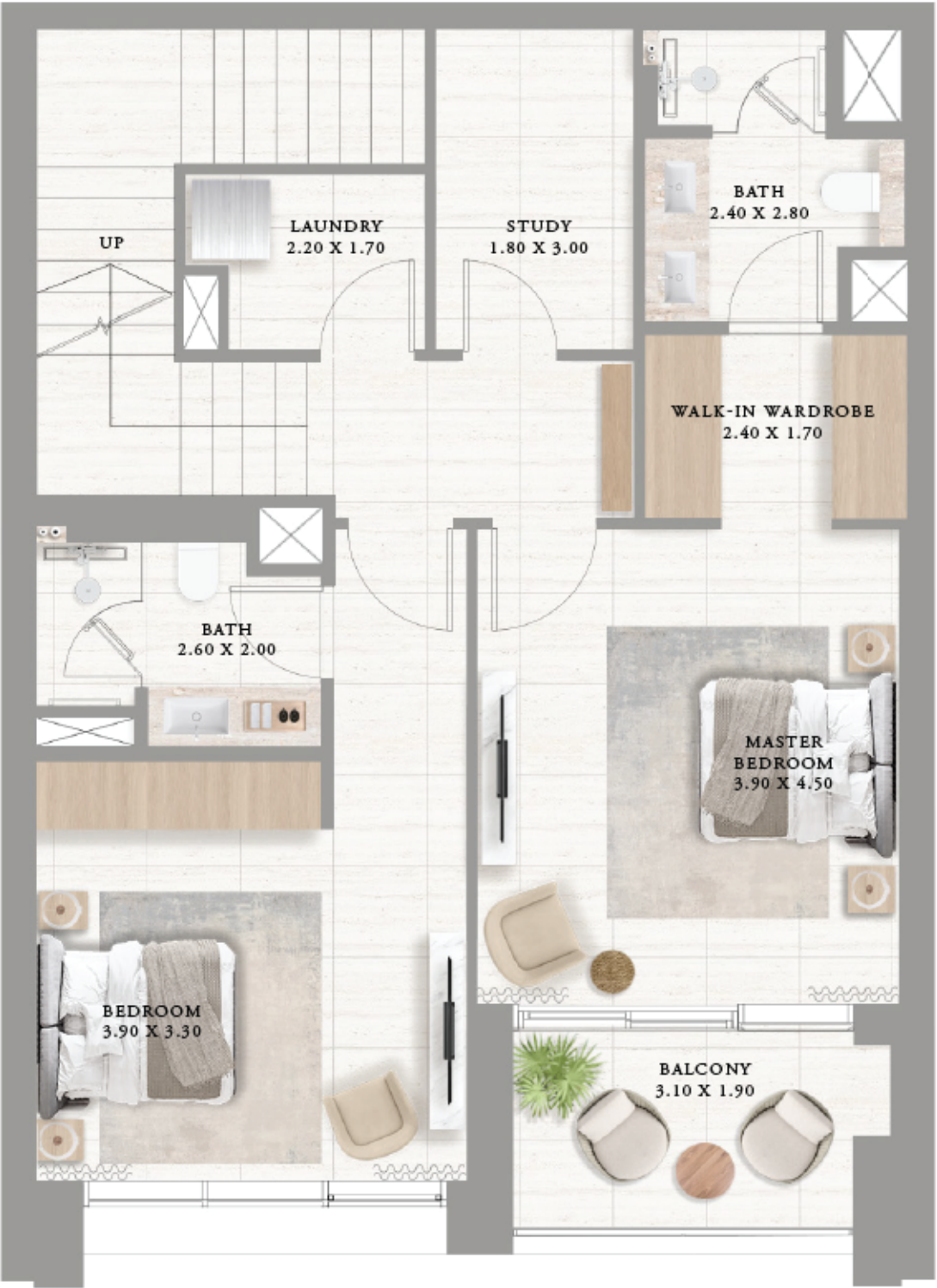
SUITE AREA	1814.9 SQ.FT.	168.61 SQ.M.
BALCONY AREA	96.34 SQ.FT.	8.95 SQ.M.
TOTAL AREA	1911.24 SQ.FT.	177.56 SQ.M.

KEY PLAN

KEY SECTION



UPPER LEVEL



LOWER LEVEL

DISCLAIMER: 1. All dimensions are in imperial and metric, and measured from finish to finish excluding construction tolerances. 2. All materials, dimensions, and drawings are approximate only. 3. Information is subject to change without notice, at the developer's absolute discretion. 4. Actual area may vary from the stated area. 5. Drawings not to scale. 6. All images used are for illustrative purposes only and do not represent the actual size, features, specifications, fittings, and furnishings. The developer reserves the right to make revisions / alterations, at its absolute discretion, without any liability whatsoever.

PALACE

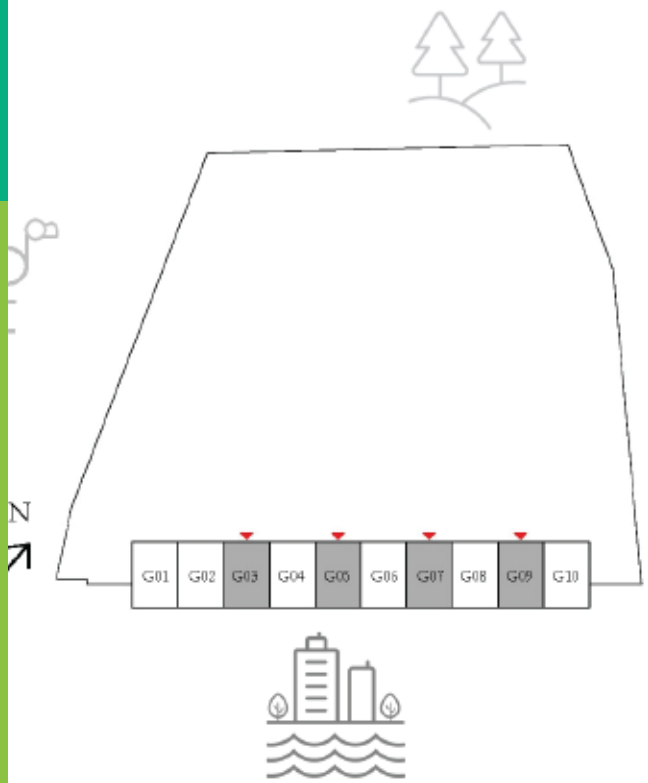
RESIDENCES - NORTH

TOWNHOUSES 3 BEDROOM

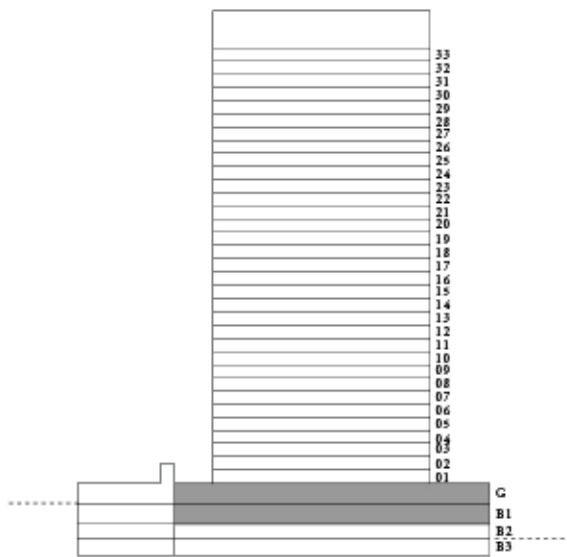
UNIT G03, G05, G07, G09 | GROUND LEVEL

SUITE AREA	1814.9 SQ.FT.	168.61 SQ.M.
BALCONY AREA	96.34 SQ.FT.	8.95 SQ.M.
TOTAL AREA	1911.24 SQ.FT.	177.56 SQ.M.

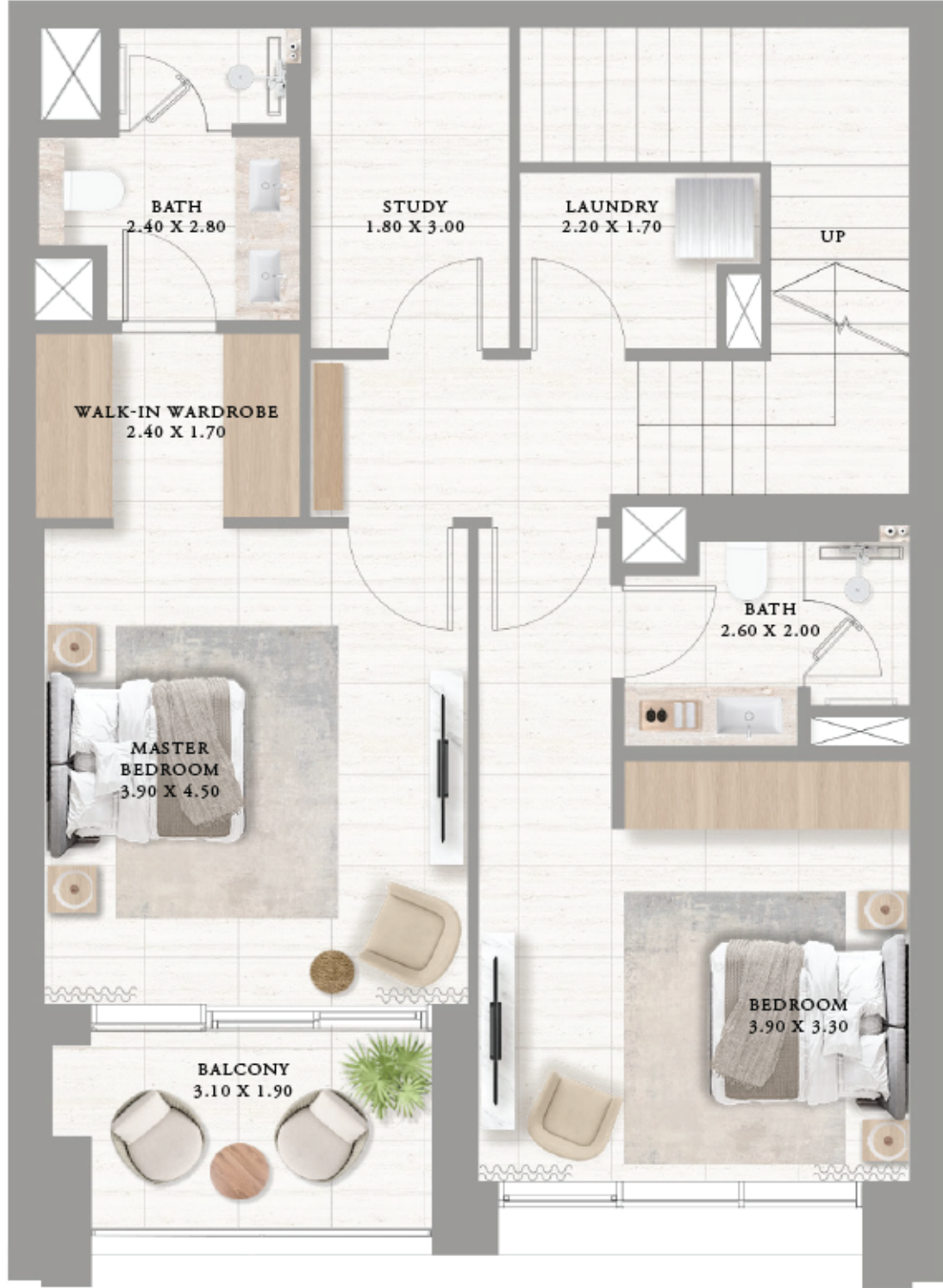
KEY PLAN



KEY SECTION



UPPER LEVEL



LOWER LEVEL

DISCLAIMER: 1. All dimensions are in imperial and metric, and measured from finish to finish excluding construction tolerances. 2. All materials, dimensions, and drawings are approximate only. 3. Information is subject to change without notice, at the developer's absolute discretion. 4. Actual area may vary from the stated area. 5. Drawings not to scale. 6. All images used are for illustrative purposes only and do not represent the actual size, features, specifications, fittings, and furnishings. The developer reserves the right to make revisions / alterations, at its absolute discretion, without any liability whatsoever.

PALACE

RESIDENCES - NORTH

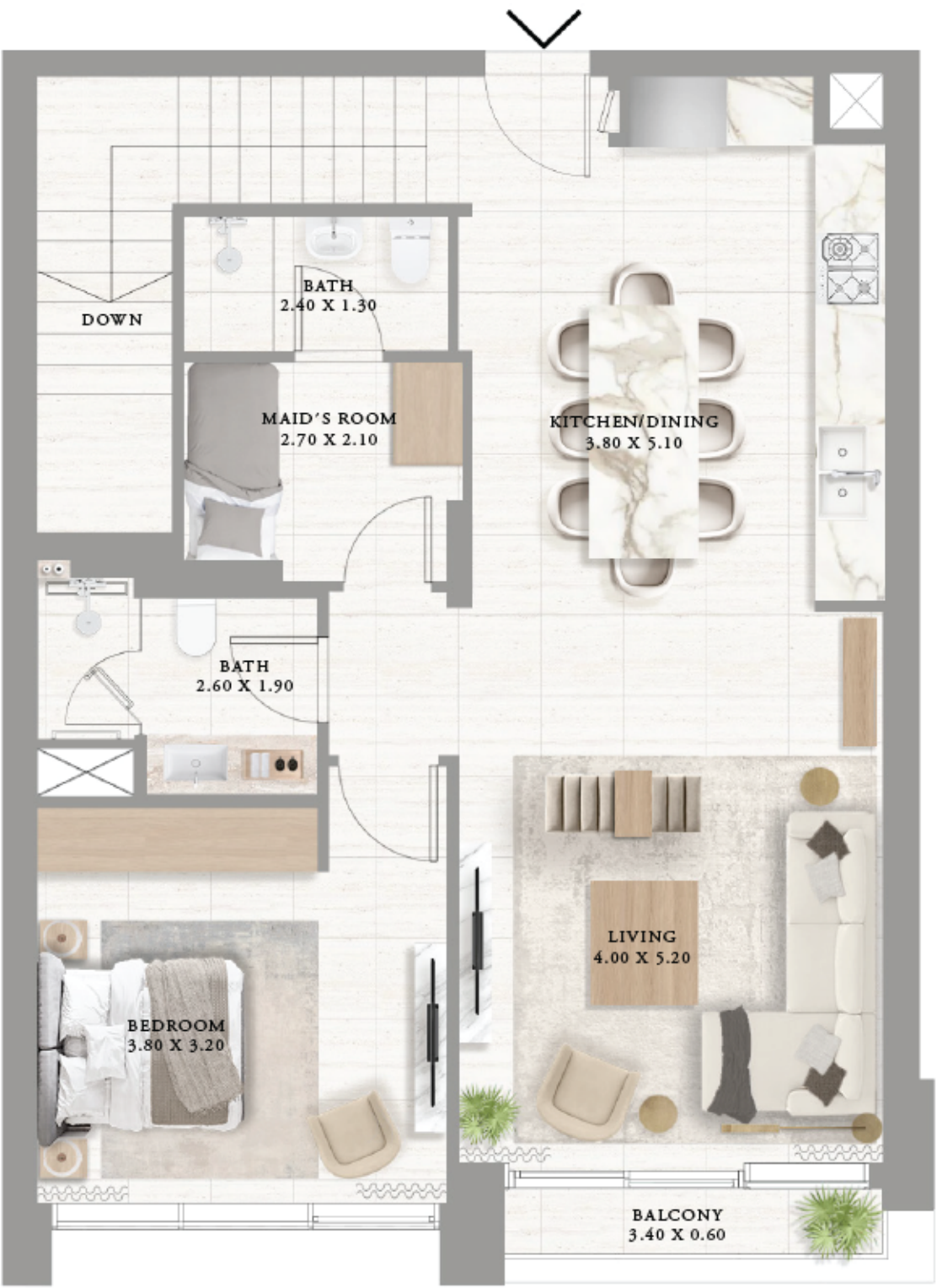
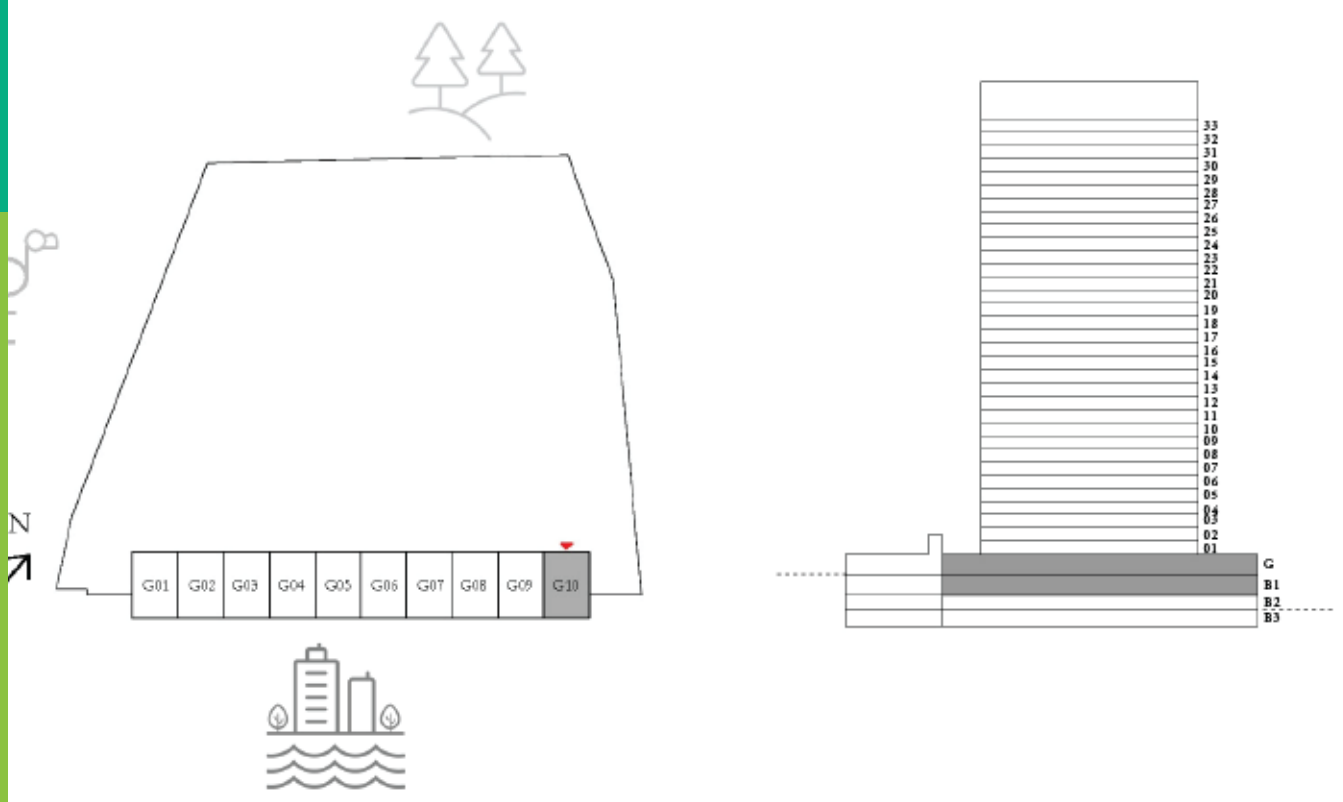
TOWNHOUSES 3 BEDROOM

UNIT G10 | GROUND LEVEL

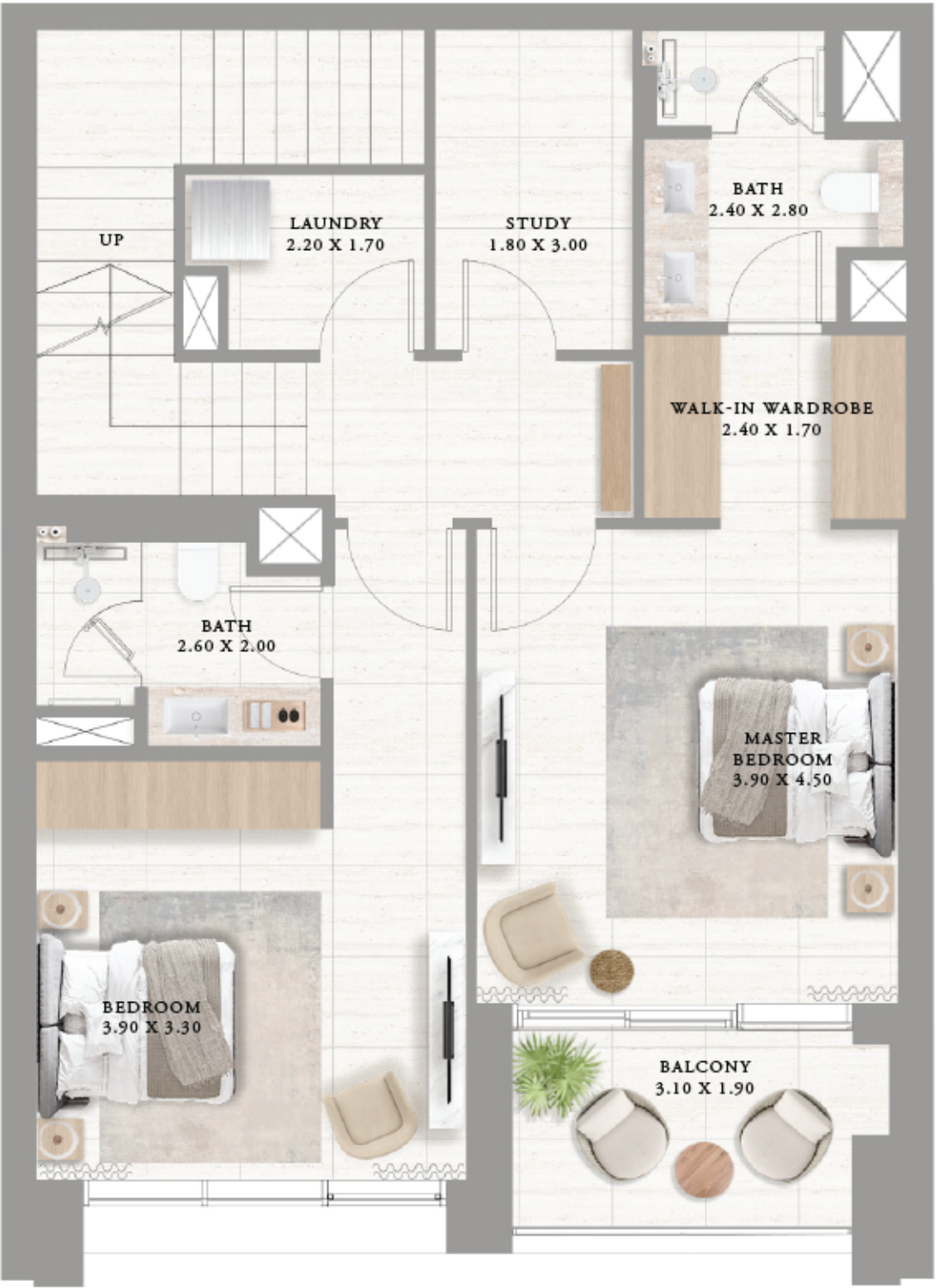
SUITE AREA	1814.9 SQ.FT.	168.61 SQ.M.
BALCONY AREA	97.09 SQ.FT.	9.02 SQ.M.
TOTAL AREA	1911.99 SQ.FT.	177.63 SQ.M.

KEY PLAN

KEY SECTION



UPPER LEVEL



LOWER LEVEL

DISCLAIMER: 1. All dimensions are in imperial and metric, and measured from finish to finish excluding construction tolerances. 2. All materials, dimensions, and drawings are approximate only. 3. Information is subject to change without notice, at the developer's absolute discretion. 4. Actual area may vary from the stated area. 5. Drawings not to scale. 6. All images used are for illustrative purposes only and do not represent the actual size, features, specifications, fittings, and furnishings. The developer reserves the right to make revisions / alterations, at its absolute discretion, without any liability whatsoever.

PALACE

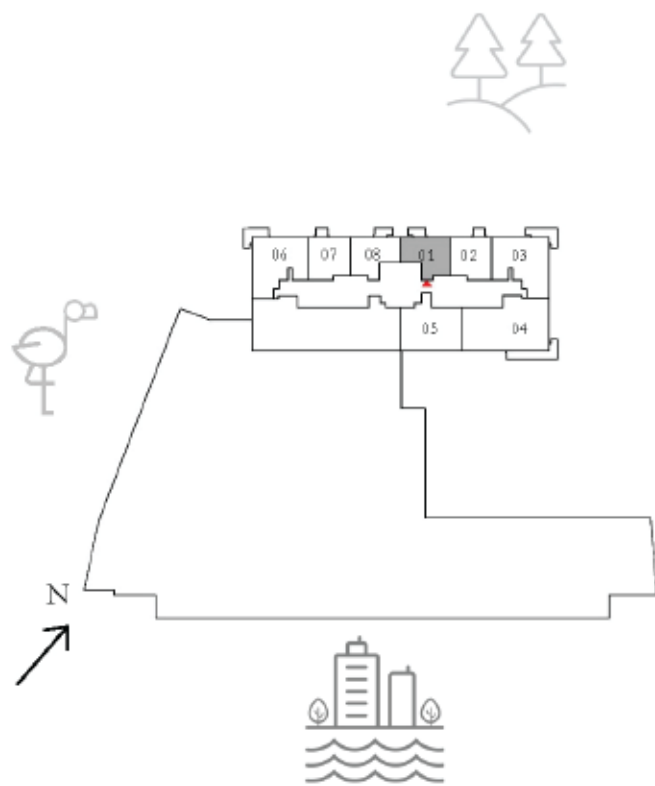
RESIDENCES - NORTH

APARTMENTS 1 BEDROOM

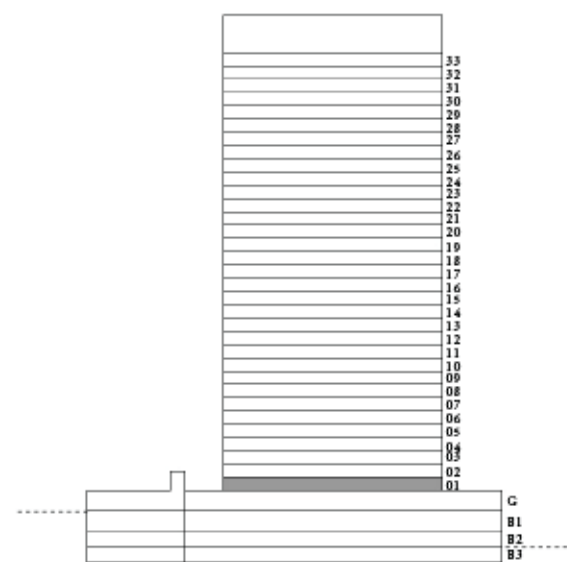
UNIT 01 | LEVEL 01

SUITE AREA	582.22 SQ.FT.	54.09 SQ.M.
BALCONY AREA	56.51 SQ.FT.	5.25 SQ.M.
TOTAL AREA	638.73 SQ.FT.	59.34 SQ.M.

KEY PLAN



KEY SECTION



FLOOR PLAN 1. All dimensions are in imperial and metric, and measured from finish to finish excluding construction tolerances. 2. All materials, dimensions, and drawings are approximate only. 3. Information is subject to change without notice, at developer's absolute discretion. 4. Actual area may vary from the stated area. 5. Drawings not to scale. 6. All images used are for illustrative purposes only and do not represent the actual size, features, specifications, fittings, and furnishings. 7. The developer reserves the right to make revisions / alterations, at it's absolute discretion, without any liability whatsoever.

PALACE

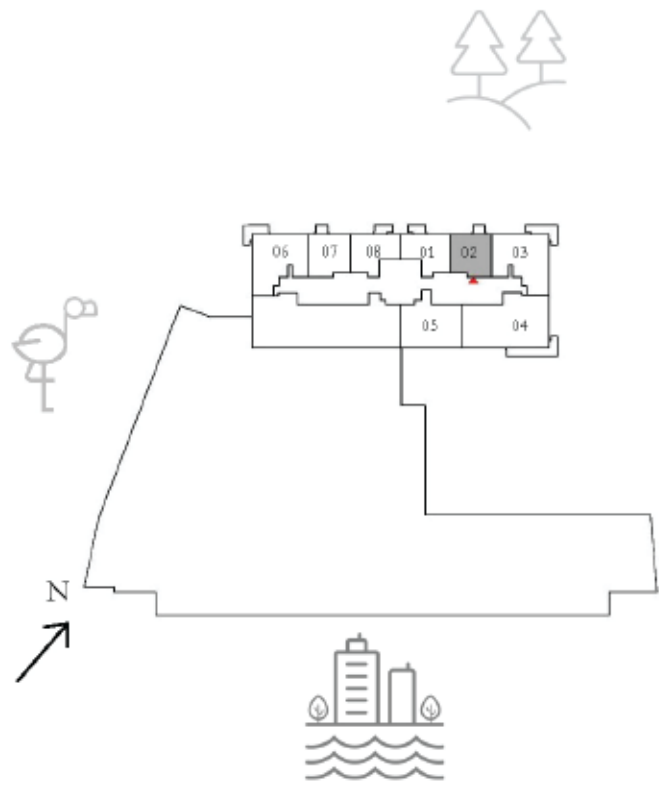
RESIDENCES - NORTH

APARTMENTS 1 BEDROOM

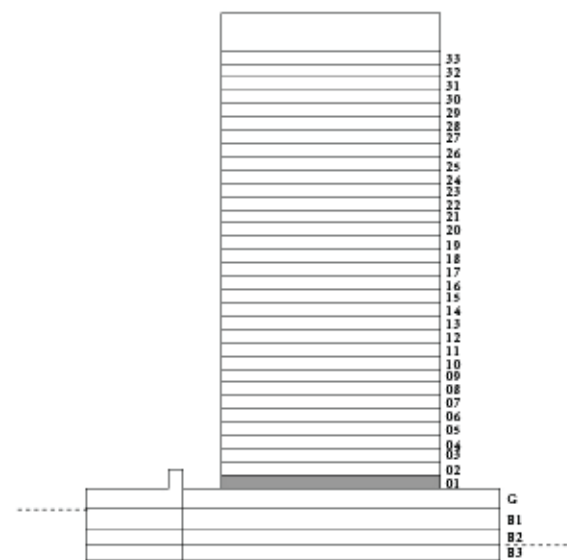
UNIT 02 | LEVEL 01

SUITE AREA	601.06 SQ.FT.	55.84 SQ.M.
BALCONY AREA	40.80 SQ.FT.	3.79 SQ.M.
TOTAL AREA	641.86 SQ.FT.	59.63 SQ.M.

KEY PLAN



KEY SECTION



FLOOR PLAN 1. All dimensions are in imperial and metric, and measured from finish to finish excluding construction tolerances. 2. All materials, dimensions, and drawings are approximate only. 3. Information is subject to change without notice, at developer's absolute discretion. 4. Actual area may vary from the stated area. 5. Drawings not to scale. 6. All images used are for illustrative purposes only and do not represent the actual size, features, specifications, fittings, and furnishings. 7. The developer reserves the right to make revisions / alterations, at it's absolute discretion, without any liability whatsoever.

PALACE

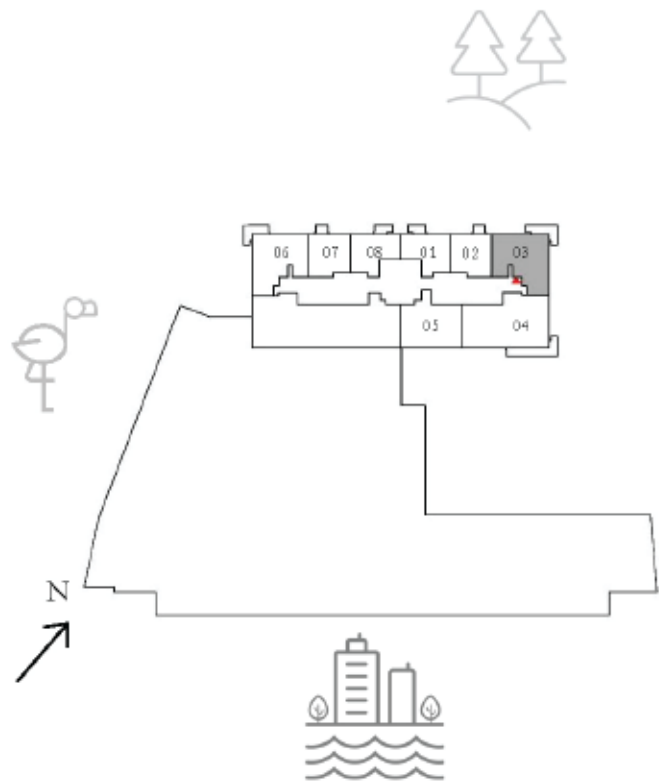
RESIDENCES - NORTH

APARTMENTS 2 BEDROOM

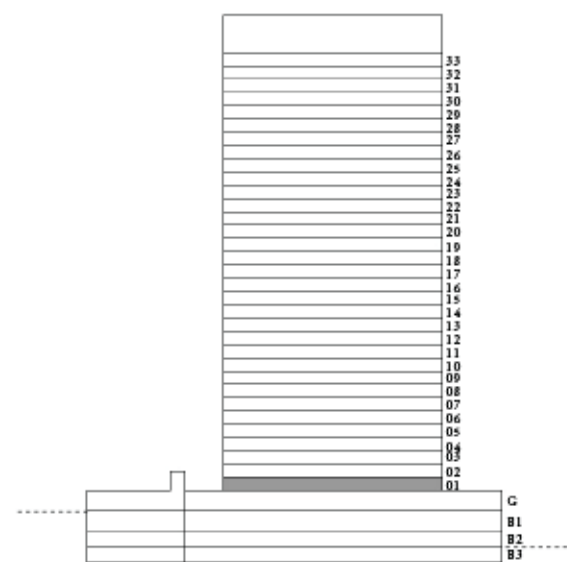
UNIT 03 | LEVEL 01

SUITE AREA	980.27 SQ.FT.	91.07 SQ.M.
BALCONY AREA	131.53 SQ.FT.	12.22 SQ.M.
TOTAL AREA	1111.80 SQ.FT.	103.29 SQ.M.

KEY PLAN



KEY SECTION



FLOOR PLAN 1. All dimensions are in imperial and metric, and measured from finish to finish excluding construction tolerances. 2. All materials, dimensions, and drawings are approximate only. 3. Information is subject to change without notice, at developer's absolute discretion. 4. Actual area may vary from the stated area. 5. Drawings not to scale. 6. All images used are for illustrative purposes only and do not represent the actual size, features, specifications, fittings, and furnishings. 7. The developer reserves the right to make revisions / alterations, at it's absolute discretion, without any liability whatsoever.

PALACE

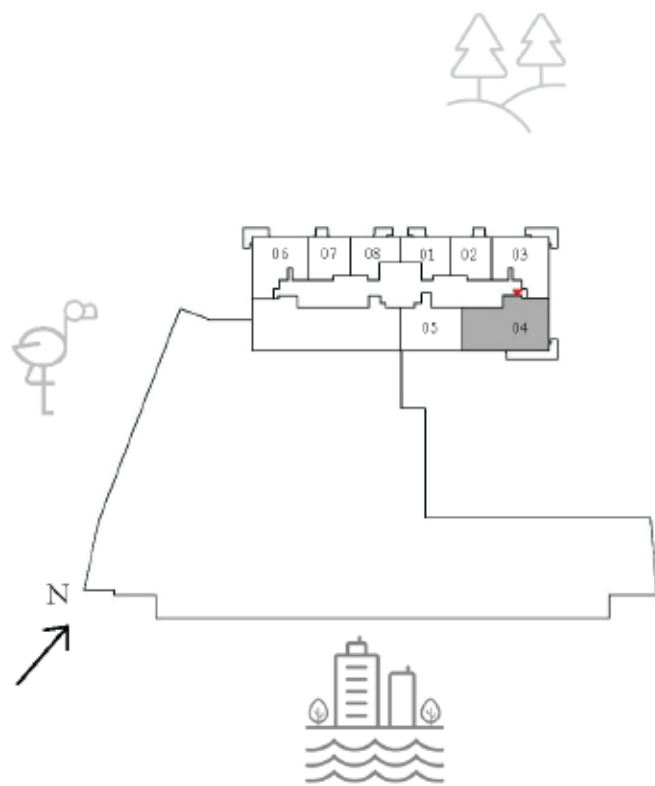
RESIDENCES - NORTH

APARTMENTS 3 BEDROOM

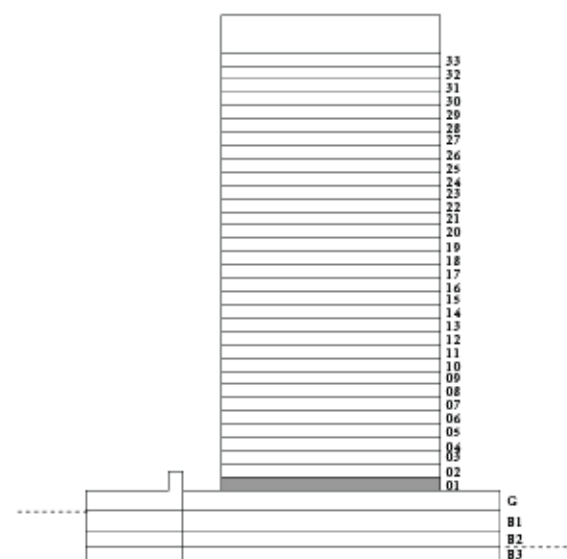
UNIT 04 | LEVEL 01

SUITE AREA	1449.79 SQ.FT.	134.69 SQ.M.
BALCONY AREA	193.21 SQ.FT.	17.95 SQ.M.
TOTAL AREA	1643.00 SQ.FT.	152.64 SQ.M.

KEY PLAN



KEY SECTION



FLOOR PLAN 1. All dimensions are in imperial and metric, and measured from finish to finish excluding construction tolerances. 2. All materials, dimensions, and drawings are approximate only. 3. Information is subject to change without notice, at developer's absolute discretion. 4. Actual area may vary from the stated area. 5. Drawings not to scale. 6. All images used are for illustrative purposes only and do not represent the actual size, features, specifications, fittings, and furnishings. 7. The developer reserves the right to make revisions / alterations, at it's absolute discretion, without any liability whatsoever.

PALACE

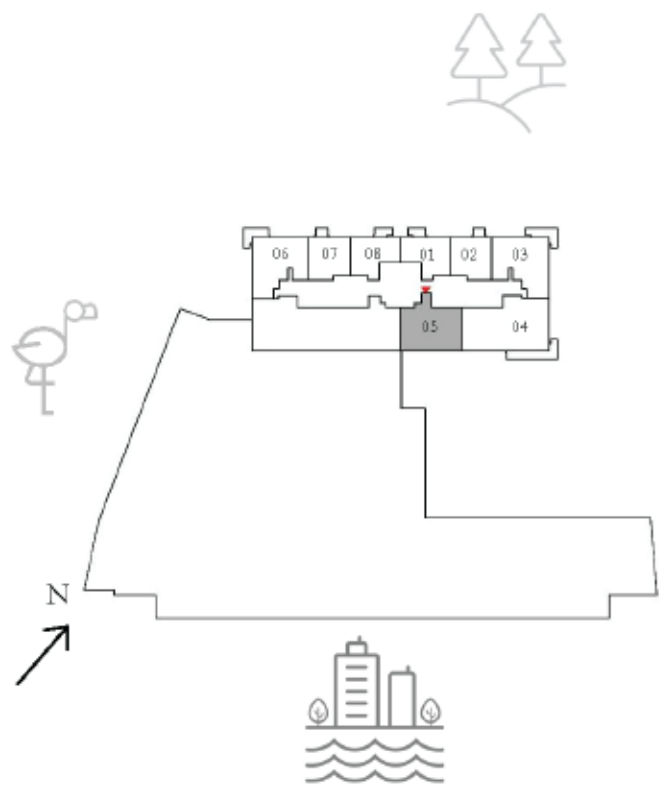
RESIDENCES - NORTH

APARTMENTS 2 BEDROOM

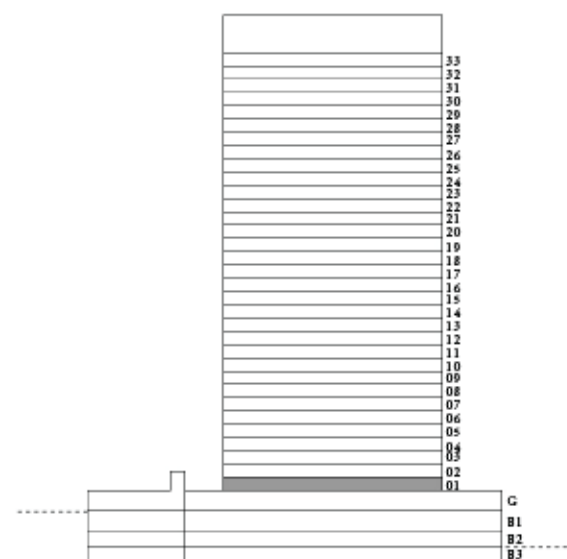
UNIT 05 | LEVEL 01

SUITE AREA	991.57 SQ.FT.	92.12 SQ.M.
BALCONY AREA	0 SQ.FT.	0 SQ.M.
TOTAL AREA	991.57 SQ.FT.	92.12 SQ.M.

KEY PLAN



KEY SECTION



FLOOR PLAN 1. All dimensions are in imperial and metric, and measured from finish to finish excluding construction tolerances. 2. All materials, dimensions, and drawings are approximate only. 3. Information is subject to change without notice, at developer's absolute discretion. 4. Actual area may vary from the stated area. 5. Drawings not to scale. 6. All images used are for illustrative purposes only and do not represent the actual size, features, specifications, fittings, and furnishings. 7. The developer reserves the right to make revisions / alterations, at it's absolute discretion, without any liability whatsoever.

PALACE

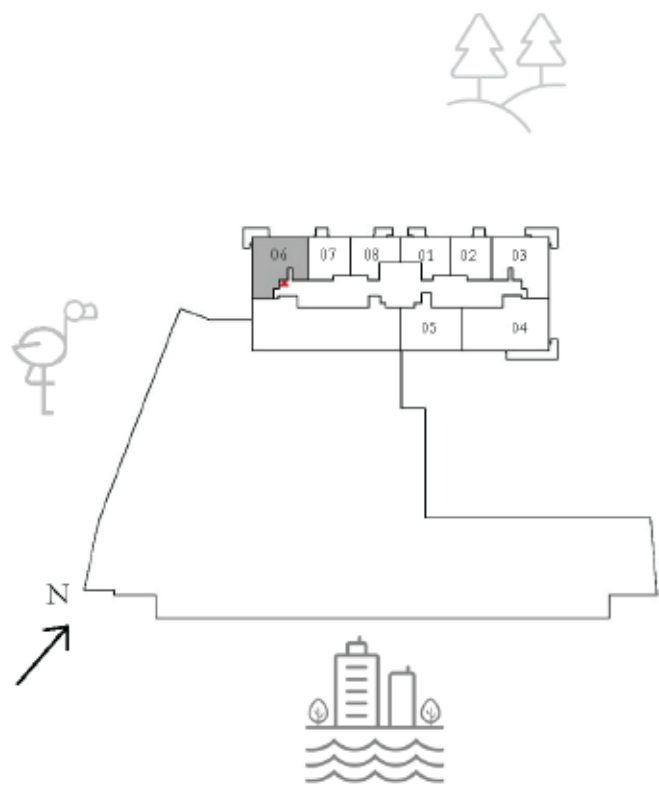
RESIDENCES - NORTH

APARTMENTS 2 BEDROOM

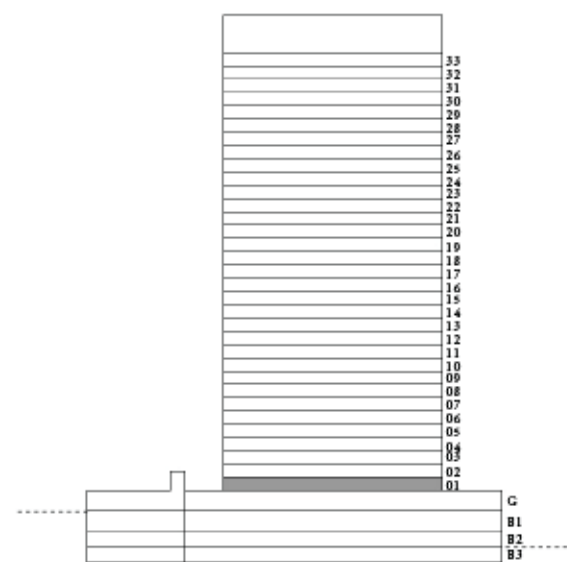
UNIT 06 | LEVEL 01

SUITE AREA	980.27 SQ.FT.	91.07 SQ.M.
BALCONY AREA	115.82 SQ.FT.	10.76 SQ.M.
TOTAL AREA	1096.09 SQ.FT.	101.83 SQ.M.

KEY PLAN



KEY SECTION



FLOOR PLAN 1. All dimensions are in imperial and metric, and measured from finish to finish excluding construction tolerances. 2. All materials, dimensions, and drawings are approximate only. 3. Information is subject to change without notice, at developer's absolute discretion. 4. Actual area may vary from the stated area. 5. Drawings not to scale. 6. All images used are for illustrative purposes only and do not represent the actual size, features, specifications, fittings, and furnishings. 7. The developer reserves the right to make revisions / alterations, at it's absolute discretion, without any liability whatsoever.

APARTMENTS 1 BEDROOM

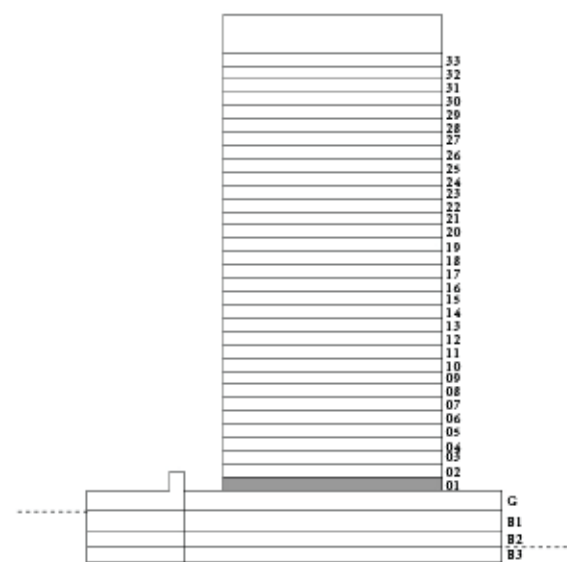
UNIT 07 | LEVEL 01

SUITE AREA	601.06 SQ.FT.	55.84 SQ.M.
BALCONY AREA	41.12 SQ.FT.	3.82 SQ.M.
TOTAL AREA	642.18 SQ.FT.	59.66 SQ.M.

KEY PLAN



KEY SECTION



FLOOR PLAN 1. All dimensions are in imperial and metric, and measured from finish to finish excluding construction tolerances. 2. All materials, dimensions, and drawings are approximate only. 3. Information is subject to change without notice, at developer's absolute discretion. 4. Actual area may vary from the stated area. 5. Drawings not to scale. 6. All images used are for illustrative purposes only and do not represent the actual size, features, specifications, fittings, and furnishings. 7. The developer reserves the right to make revisions / alterations, at it's absolute discretion, without any liability whatsoever.

PALACE

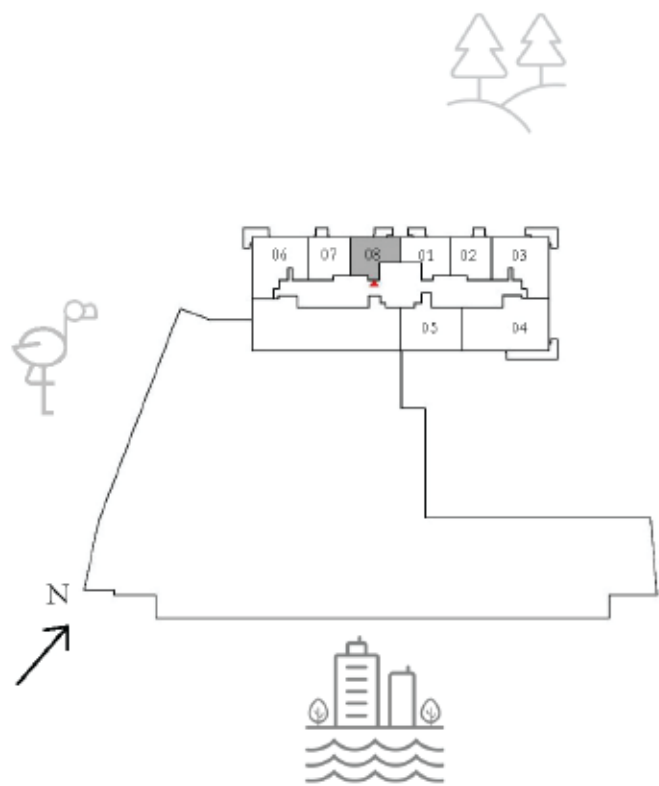
RESIDENCES - NORTH

APARTMENTS 1 BEDROOM

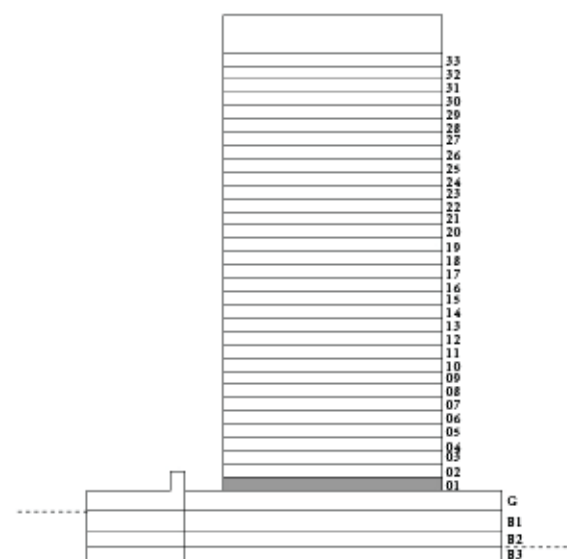
UNIT 08 | LEVEL 01

SUITE AREA	582.22 SQ.FT.	54.09 SQ.M.
BALCONY AREA	56.73 SQ.FT.	5.27 SQ.M.
TOTAL AREA	638.95 SQ.FT.	59.36 SQ.M.

KEY PLAN



KEY SECTION



FLOOR PLAN 1. All dimensions are in imperial and metric, and measured from finish to finish excluding construction tolerances. 2. All materials, dimensions, and drawings are approximate only. 3. Information is subject to change without notice, at developer's absolute discretion. 4. Actual area may vary from the stated area. 5. Drawings not to scale. 6. All images used are for illustrative purposes only and do not represent the actual size, features, specifications, fittings, and furnishings. 7. The developer reserves the right to make revisions / alterations, at it's absolute discretion, without any liability whatsoever.

PALACE

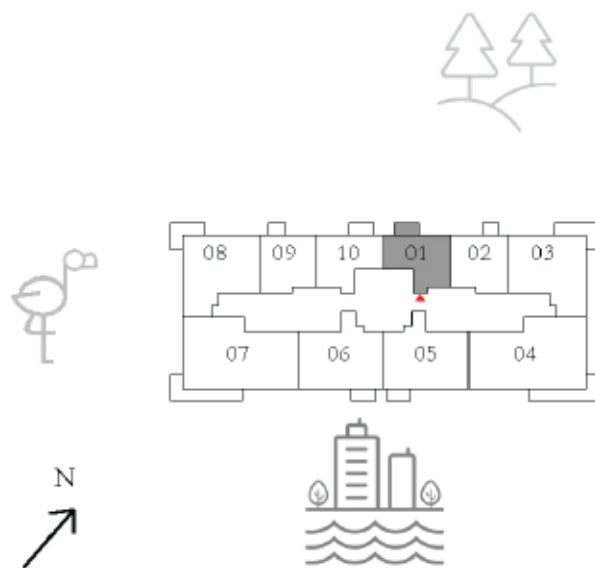
RESIDENCES - NORTH

APARTMENTS 1 BEDROOM

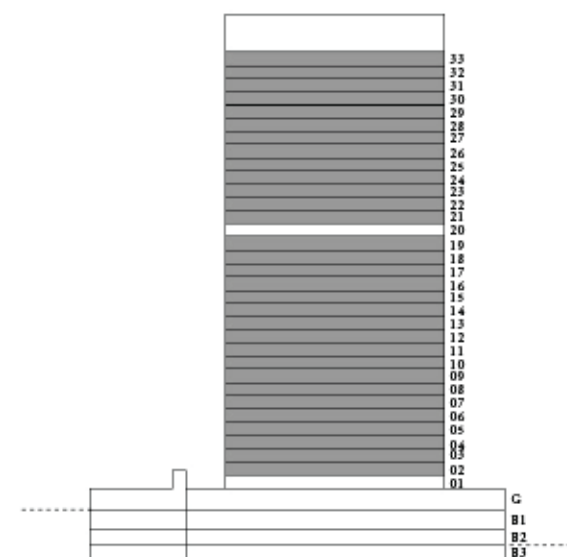
UNIT 01 | LEVEL 02-19, 21-33

SUITE AREA	582.22 SQ.FT.	54.09 SQ.M.
BALCONY AREA	56.51 SQ.FT.	5.25 SQ.M.
TOTAL AREA	638.73 SQ.FT.	59.34 SQ.M.

KEY PLAN



KEY SECTION



FLOOR PLAN 1. All dimensions are in imperial and metric, and measured from finish to finish excluding construction tolerances. 2. All materials, dimensions, and drawings are approximate only. 3. Information is subject to change without notice, at developer's absolute discretion. 4. Actual area may vary from the stated area. 5. Drawings not to scale. 6. All images used are for illustrative purposes only and do not represent the actual size, features, specifications, fittings, and furnishings. 7. The developer reserves the right to make revisions / alterations, at it's absolute discretion, without any liability whatsoever.

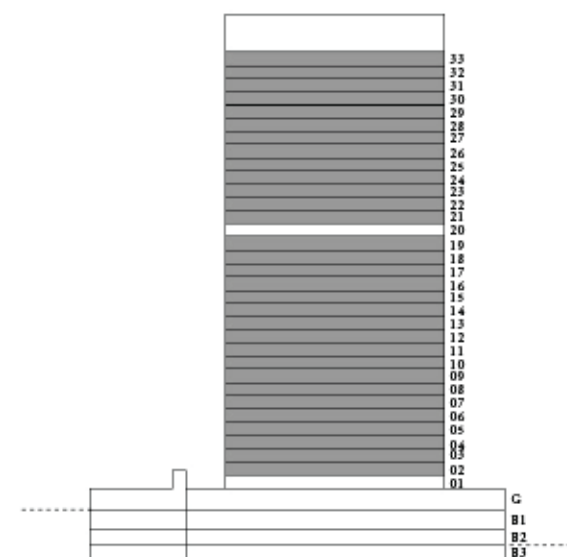
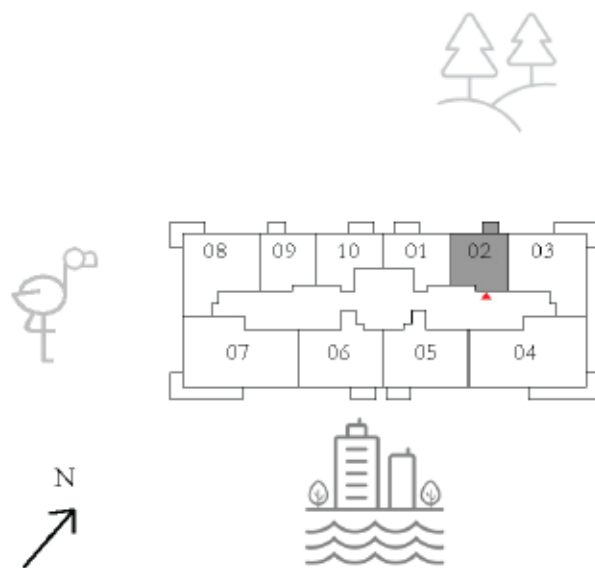
APARTMENTS 1 BEDROOM

UNIT 02 | LEVEL 02-19, 21-33

SUITE AREA	601.06 SQ.FT.	55.84 SQ.M.
BALCONY AREA	40.80 SQ.FT.	3.79 SQ.M.
TOTAL AREA	641.86 SQ.FT.	59.63 SQ.M.

KEY PLAN

KEY SECTION



FLOOR PLAN 1. All dimensions are in imperial and metric, and measured from finish to finish excluding construction tolerances. 2. All materials, dimensions, and drawings are approximate only. 3. Information is subject to change without notice, at developer's absolute discretion. 4. Actual area may vary from the stated area. 5. Drawings not to scale. 6. All images used are for illustrative purposes only and do not represent the actual size, features, specifications, fittings, and furnishings. 7. The developer reserves the right to make revisions / alterations, at it's absolute discretion, without any liability whatsoever.

PALACE

RESIDENCES - NORTH

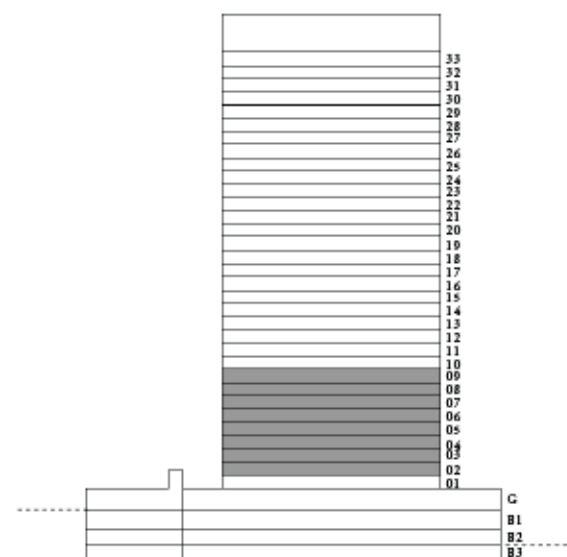
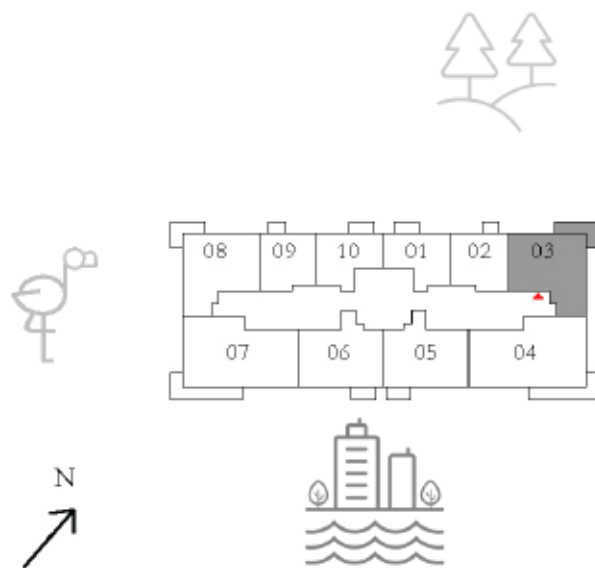
APARTMENTS 2 BEDROOM

UNIT 03 | LEVEL 02-09

SUITE AREA	980.27 SQ.FT.	91.07 SQ.M.
BALCONY AREA	131.53 SQ.FT.	12.22 SQ.M.
TOTAL AREA	1111.80 SQ.FT.	103.29 SQ.M.

KEY PLAN

KEY SECTION



FLOOR PLAN 1. All dimensions are in imperial and metric, and measured from finish to finish excluding construction tolerances. 2. All materials, dimensions, and drawings are approximate only. 3. Information is subject to change without notice, at developer's absolute discretion. 4. Actual area may vary from the stated area. 5. Drawings not to scale. 6. All images used are for illustrative purposes only and do not represent the actual size, features, specifications, fittings, and furnishings. 7. The developer reserves the right to make revisions / alterations, at it's absolute discretion, without any liability whatsoever.

PALACE

RESIDENCES - NORTH

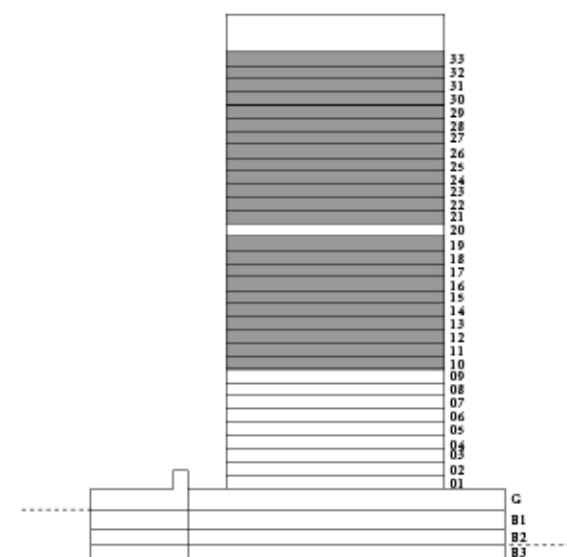
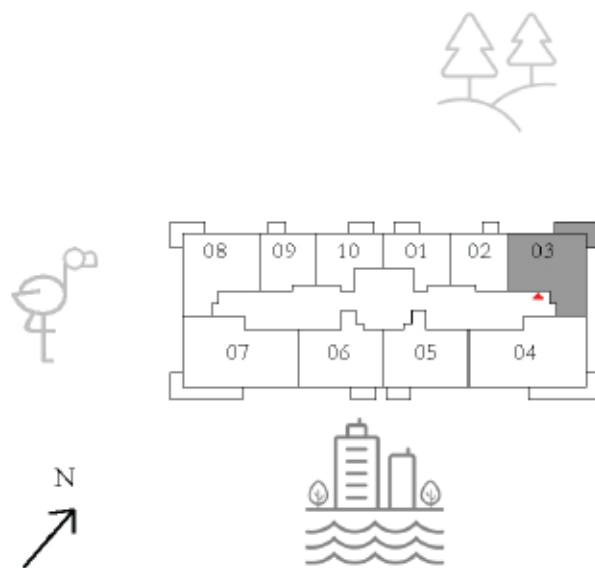
APARTMENTS 2 BEDROOM

UNIT 03 | LEVEL 10-19, 21-33

SUITE AREA	982.42 SQ.FT.	91.27 SQ.M.
BALCONY AREA	131.53 SQ.FT.	12.22 SQ.M.
TOTAL AREA	1113.95 SQ.FT.	103.49 SQ.M.

KEY PLAN

KEY SECTION



FLOOR PLAN 1. All dimensions are in imperial and metric, and measured from finish to finish excluding construction tolerances. 2. All materials, dimensions, and drawings are approximate only. 3. Information is subject to change without notice, at developer's absolute discretion. 4. Actual area may vary from the stated area. 5. Drawings not to scale. 6. All images used are for illustrative purposes only and do not represent the actual size, features, specifications, fittings, and furnishings. 7. The developer reserves the right to make revisions / alterations, at it's absolute discretion, without any liability whatsoever.

PALACE

RESIDENCES - NORTH

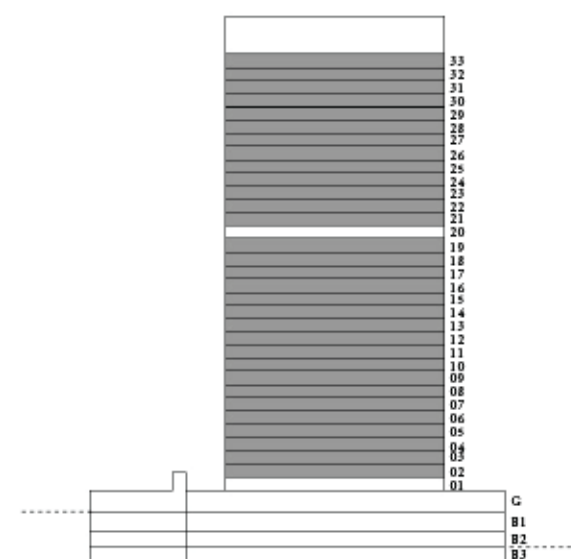
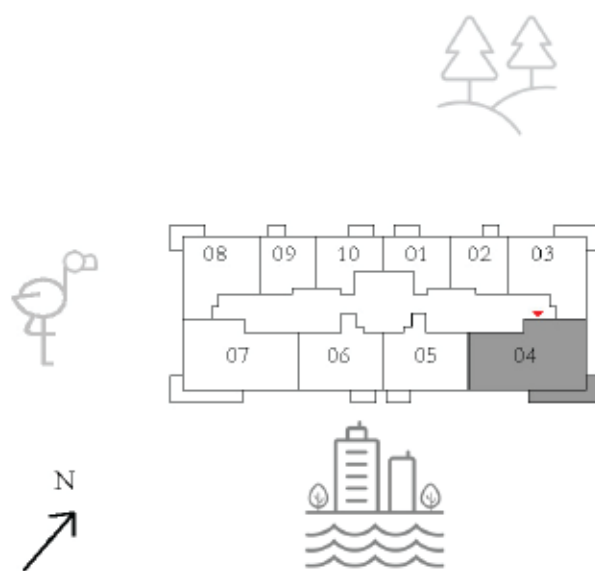
APARTMENTS 3 BEDROOM

UNIT 04 | LEVEL 02-19, 21-33

SUITE AREA	1451.19 SQ.FT.	134.82 SQ.M.
BALCONY AREA	193.21 SQ.FT.	17.95 SQ.M.
TOTAL AREA	1644.40 SQ.FT.	152.77 SQ.M.

KEY PLAN

KEY SECTION



FLOOR PLAN 1. All dimensions are in imperial and metric, and measured from finish to finish excluding construction tolerances. 2. All materials, dimensions, and drawings are approximate only. 3. Information is subject to change without notice, at developer's absolute discretion. 4. Actual area may vary from the stated area. 5. Drawings not to scale. 6. All images used are for illustrative purposes only and do not represent the actual size, features, specifications, fittings, and furnishings. 7. The developer reserves the right to make revisions / alterations, at it's absolute discretion, without any liability whatsoever.

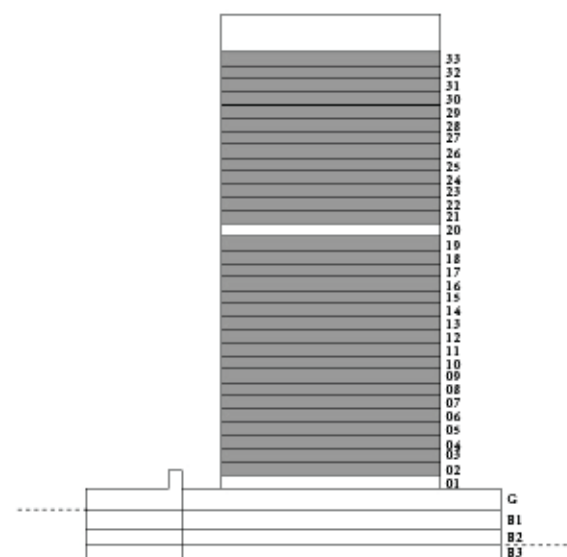
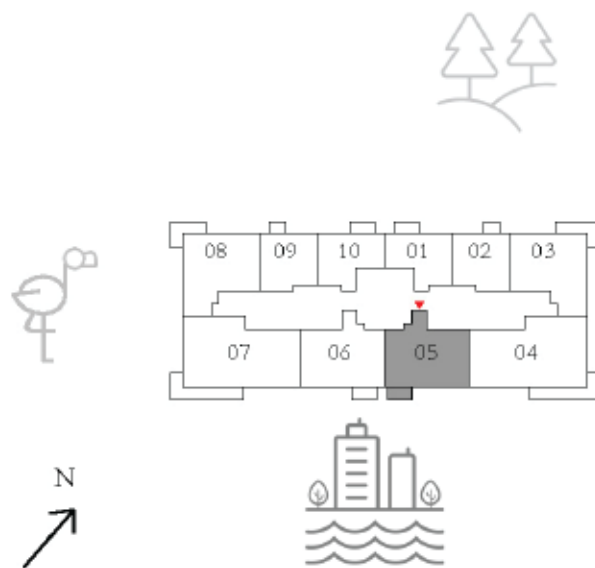
APARTMENTS 2 BEDROOM

UNIT 05 | LEVEL 02-19, 21-33

SUITE AREA	990.17 SQ.FT.	91.99 SQ.M.
BALCONY AREA	56.51 SQ.FT.	5.25 SQ.M.
TOTAL AREA	1046.68 SQ.FT.	97.24 SQ.M.

KEY PLAN

KEY SECTION



FLOOR PLAN 1. All dimensions are in imperial and metric, and measured from finish to finish excluding construction tolerances. 2. All materials, dimensions, and drawings are approximate only. 3. Information is subject to change without notice, at developer's absolute discretion. 4. Actual area may vary from the stated area. 5. Drawings not to scale. 6. All images used are for illustrative purposes only and do not represent the actual size, features, specifications, fittings, and furnishings. 7. The developer reserves the right to make revisions / alterations, at it's absolute discretion, without any liability whatsoever.

PALACE

RESIDENCES - NORTH

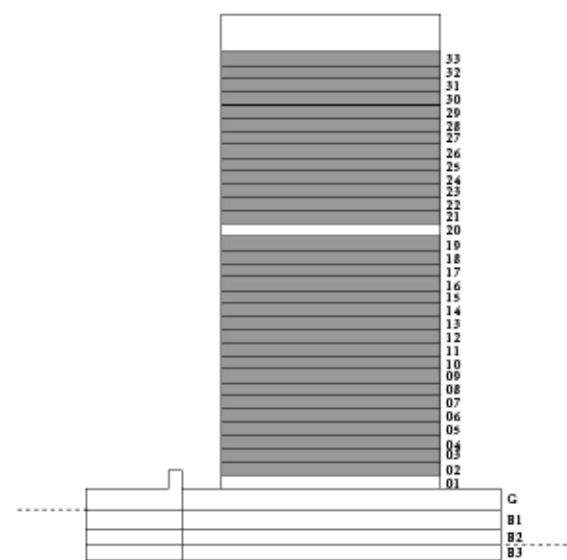
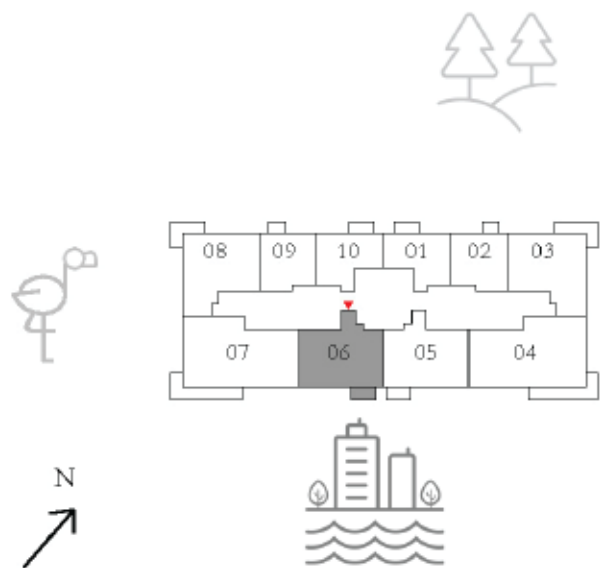
APARTMENTS 2 BEDROOM

UNIT 06 | LEVEL 02-19, 21-33

SUITE AREA	993.40 SQ.FT.	92.29 SQ.M.
BALCONY AREA	56.51 SQ.FT.	5.25 SQ.M.
TOTAL AREA	1049.91 SQ.FT.	97.54 SQ.M.

KEY PLAN

KEY SECTION



FLOOR PLAN 1. All dimensions are in imperial and metric, and measured from finish to finish excluding construction tolerances. 2. All materials, dimensions, and drawings are approximate only. 3. Information is subject to change without notice, at developer's absolute discretion. 4. Actual area may vary from the stated area. 5. Drawings not to scale. 6. All images used are for illustrative purposes only and do not represent the actual size, features, specifications, fittings, and furnishings. 7. The developer reserves the right to make revisions / alterations, at it's absolute discretion, without any liability whatsoever.

PALACE

RESIDENCES - NORTH

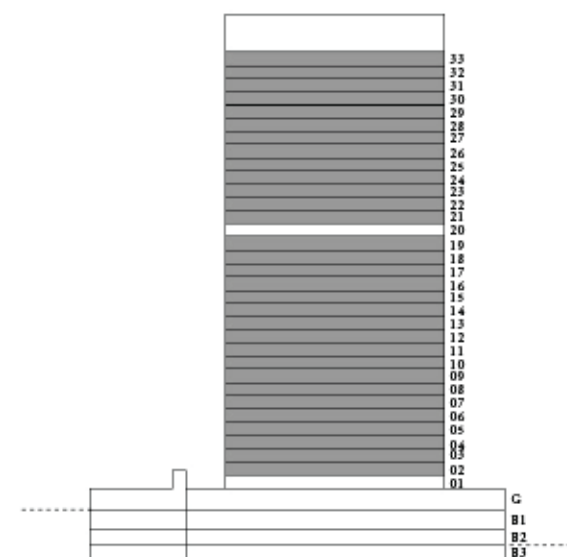
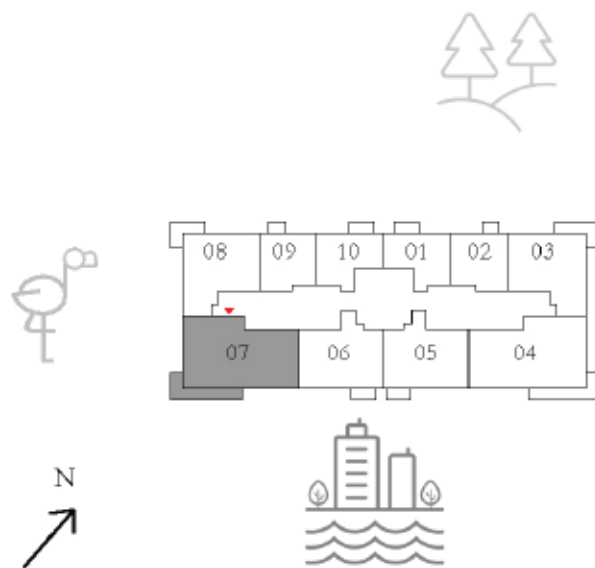
APARTMENTS 3 BEDROOM

UNIT 07 | LEVEL 02-19, 21-33

SUITE AREA	1451.62 SQ.FT.	134.86 SQ.M.
BALCONY AREA	202.04 SQ.FT.	18.77 SQ.M.
TOTAL AREA	1653.66 SQ.FT.	153.63 SQ.M.

KEY PLAN

KEY SECTION



FLOOR PLAN 1. All dimensions are in imperial and metric, and measured from finish to finish excluding construction tolerances. 2. All materials, dimensions, and drawings are approximate only. 3. Information is subject to change without notice, at developer's absolute discretion. 4. Actual area may vary from the stated area. 5. Drawings not to scale. 6. All images used are for illustrative purposes only and do not represent the actual size, features, specifications, fittings, and furnishings. 7. The developer reserves the right to make revisions / alterations, at it's absolute discretion, without any liability whatsoever.

PALACE

RESIDENCES - NORTH

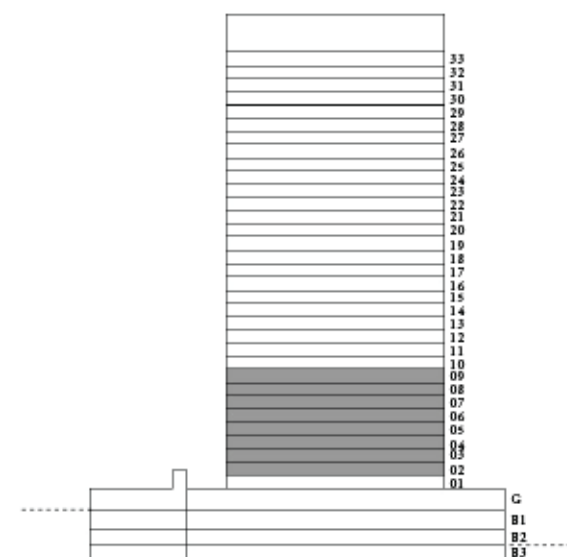
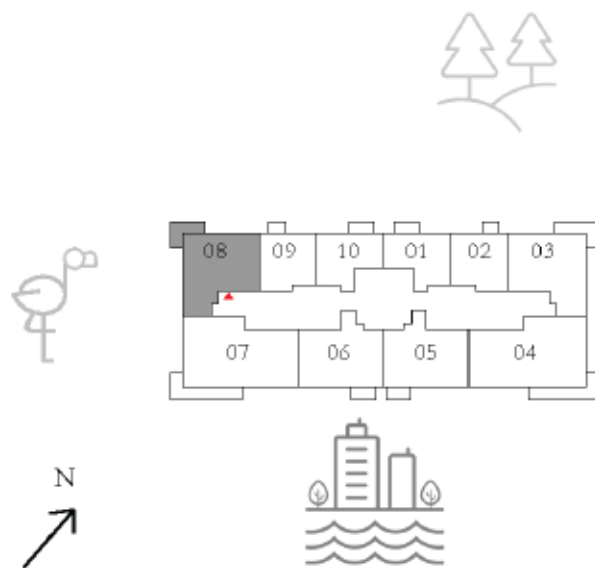
APARTMENTS 2 BEDROOM

UNIT 08 | LEVEL 02-09

SUITE AREA	980.27 SQ.FT.	91.07 SQ.M.
BALCONY AREA	115.82 SQ.FT.	10.76 SQ.M.
TOTAL AREA	1096.09 SQ.FT.	101.83 SQ.M.

KEY PLAN

KEY SECTION



FLOOR PLAN 1. All dimensions are in imperial and metric, and measured from finish to finish excluding construction tolerances. 2. All materials, dimensions, and drawings are approximate only. 3. Information is subject to change without notice, at developer's absolute discretion. 4. Actual area may vary from the stated area. 5. Drawings not to scale. 6. All images used are for illustrative purposes only and do not represent the actual size, features, specifications, fittings, and furnishings. 7. The developer reserves the right to make revisions / alterations, at it's absolute discretion, without any liability whatsoever.

PALACE

RESIDENCES - NORTH

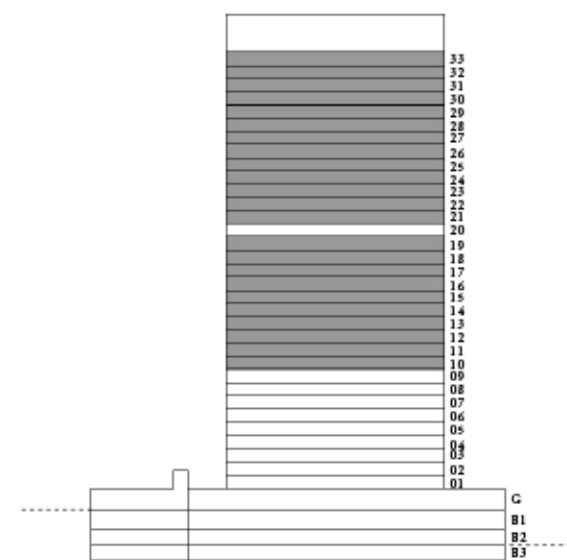
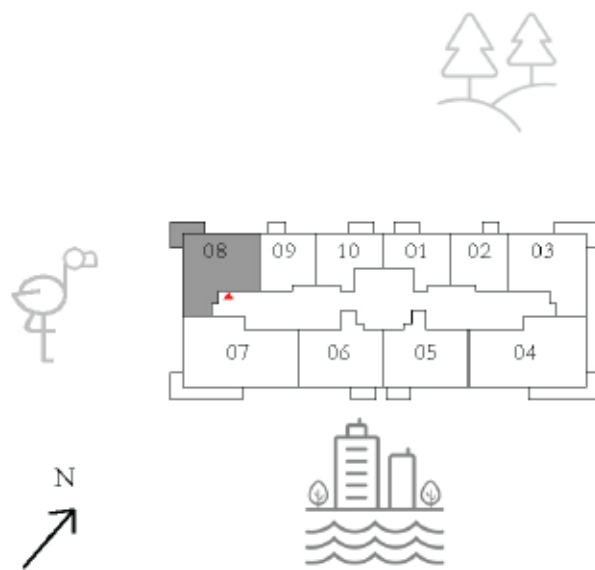
APARTMENTS 2 BEDROOM

UNIT 08 | LEVEL 10-19, 21-33

SUITE AREA	982.42 SQ.FT.	91.27 SQ.M.
BALCONY AREA	115.82 SQ.FT.	10.76 SQ.M.
TOTAL AREA	1098.24 SQ.FT.	102.03 SQ.M.

KEY PLAN

KEY SECTION



FLOOR PLAN 1. All dimensions are in imperial and metric, and measured from finish to finish excluding construction tolerances. 2. All materials, dimensions, and drawings are approximate only. 3. Information is subject to change without notice, at developer's absolute discretion. 4. Actual area may vary from the stated area. 5. Drawings not to scale. 6. All images used are for illustrative purposes only and do not represent the actual size, features, specifications, fittings, and furnishings. 7. The developer reserves the right to make revisions / alterations, at it's absolute discretion, without any liability whatsoever.

PALACE

RESIDENCES - NORTH

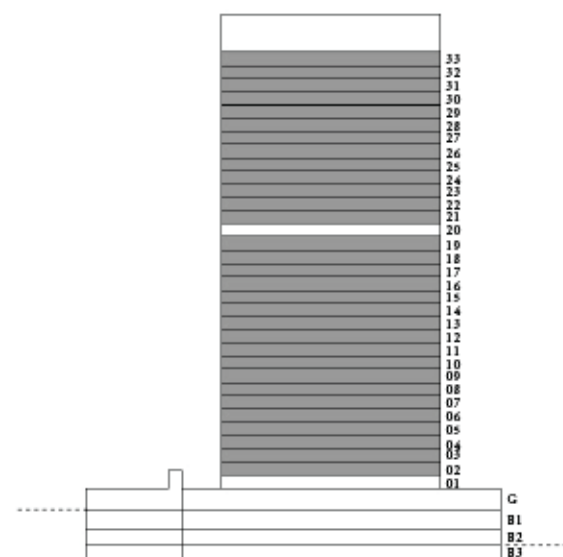
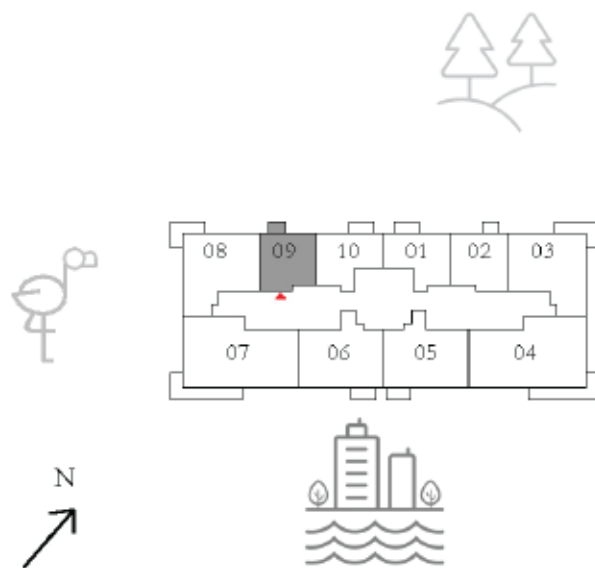
APARTMENTS 1 BEDROOM

UNIT 09 | LEVEL 02-19, 21-33

SUITE AREA	601.06 SQ.FT.	55.84 SQ.M.
BALCONY AREA	41.12 SQ.FT.	3.82 SQ.M.
TOTAL AREA	642.18 SQ.FT.	59.66 SQ.M.

KEY PLAN

KEY SECTION



FLOOR PLAN 1. All dimensions are in imperial and metric, and measured from finish to finish excluding construction tolerances. 2. All materials, dimensions, and drawings are approximate only. 3. Information is subject to change without notice, at developer's absolute discretion. 4. Actual area may vary from the stated area. 5. Drawings not to scale. 6. All images used are for illustrative purposes only and do not represent the actual size, features, specifications, fittings, and furnishings. 7. The developer reserves the right to make revisions / alterations, at it's absolute discretion, without any liability whatsoever.

PALACE

RESIDENCES - NORTH

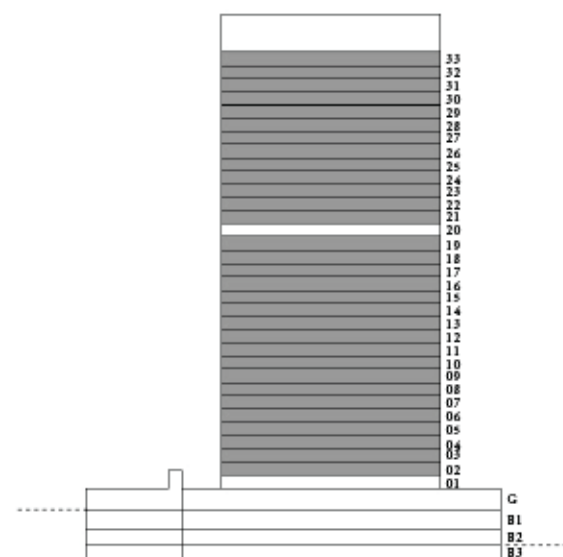
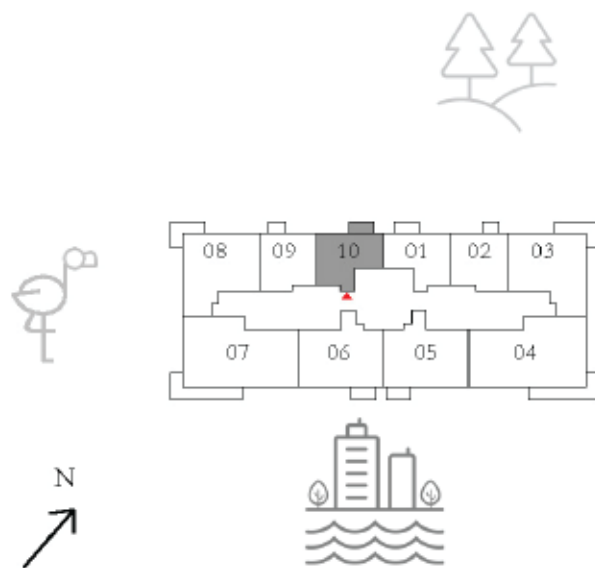
APARTMENTS 1 BEDROOM

UNIT 10 | LEVEL 02-19, 21-33

SUITE AREA	582.22 SQ.FT.	54.09 SQ.M.
BALCONY AREA	56.73 SQ.FT.	5.27 SQ.M.
TOTAL AREA	638.95 SQ.FT.	59.36 SQ.M.

KEY PLAN

KEY SECTION



FLOOR PLAN 1. All dimensions are in imperial and metric, and measured from finish to finish excluding construction tolerances. 2. All materials, dimensions, and drawings are approximate only. 3. Information is subject to change without notice, at developer's absolute discretion. 4. Actual area may vary from the stated area. 5. Drawings not to scale. 6. All images used are for illustrative purposes only and do not represent the actual size, features, specifications, fittings, and furnishings. 7. The developer reserves the right to make revisions / alterations, at it's absolute discretion, without any liability whatsoever.

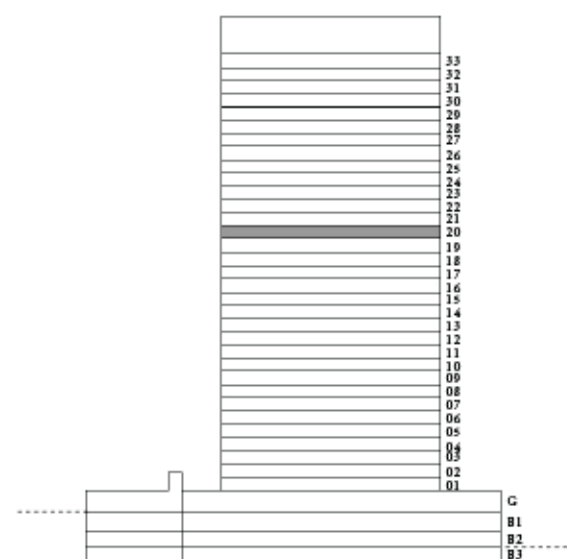
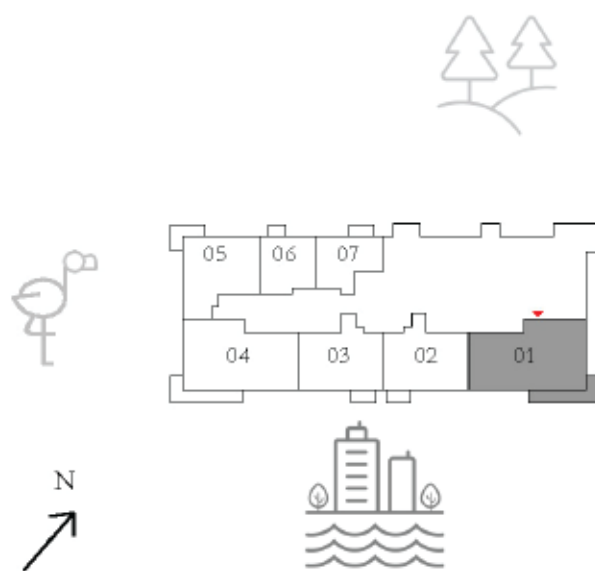
APARTMENTS 3 BEDROOM

UNIT 01 | LEVEL 20

SUITE AREA	1451.19 SQ.FT.	134.82 SQ.M.
BALCONY AREA	193.21 SQ.FT.	17.95 SQ.M.
TOTAL AREA	1644.40 SQ.FT.	152.77 SQ.M.

KEY PLAN

KEY SECTION



FLOOR PLAN 1. All dimensions are in imperial and metric, and measured from finish to finish excluding construction tolerances. 2. All materials, dimensions, and drawings are approximate only. 3. Information is subject to change without notice, at developer's absolute discretion. 4. Actual area may vary from the stated area. 5. Drawings not to scale. 6. All images used are for illustrative purposes only and do not represent the actual size, features, specifications, fittings, and furnishings. 7. The developer reserves the right to make revisions / alterations, at it's absolute discretion, without any liability whatsoever.

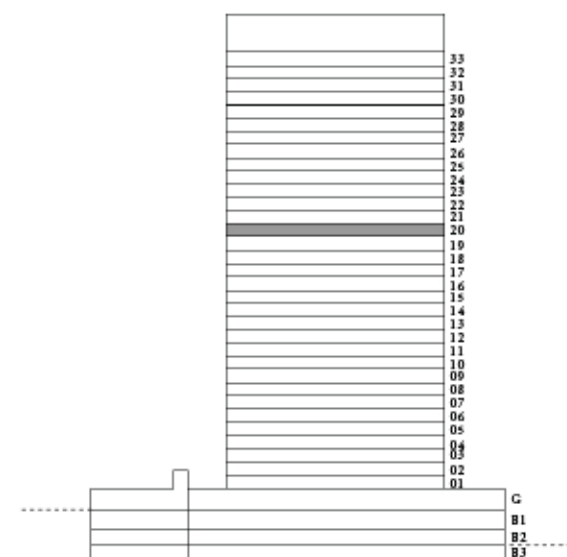
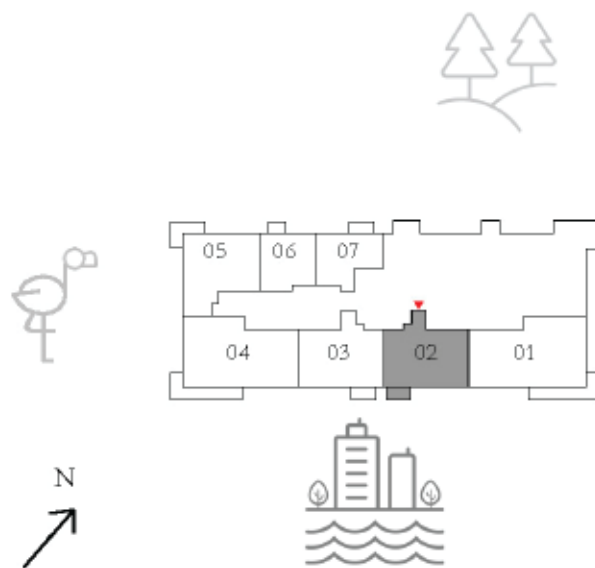
APARTMENTS 2 BEDROOM

UNIT 02 | LEVEL 20

SUITE AREA	990.17 SQ.FT.	91.99 SQ.M.
BALCONY AREA	56.51 SQ.FT.	5.25 SQ.M.
TOTAL AREA	1046.68 SQ.FT.	97.24 SQ.M.

KEY PLAN

KEY SECTION



FLOOR PLAN 1. All dimensions are in imperial and metric, and measured from finish to finish excluding construction tolerances. 2. All materials, dimensions, and drawings are approximate only. 3. Information is subject to change without notice, at developer's absolute discretion. 4. Actual area may vary from the stated area. 5. Drawings not to scale. 6. All images used are for illustrative purposes only and do not represent the actual size, features, specifications, fittings, and furnishings. 7. The developer reserves the right to make revisions / alterations, at it's absolute discretion, without any liability whatsoever.

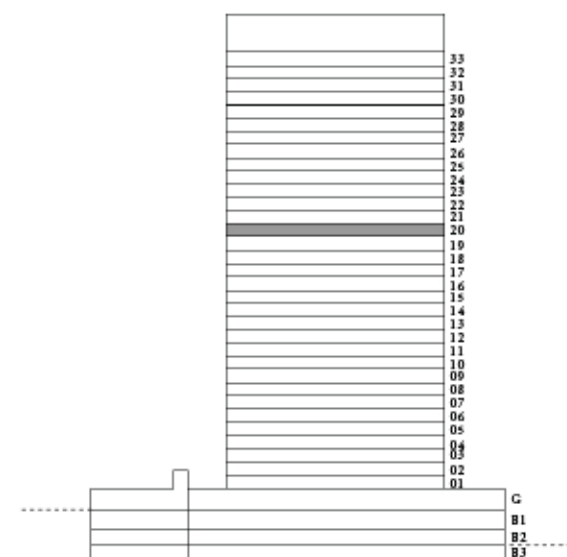
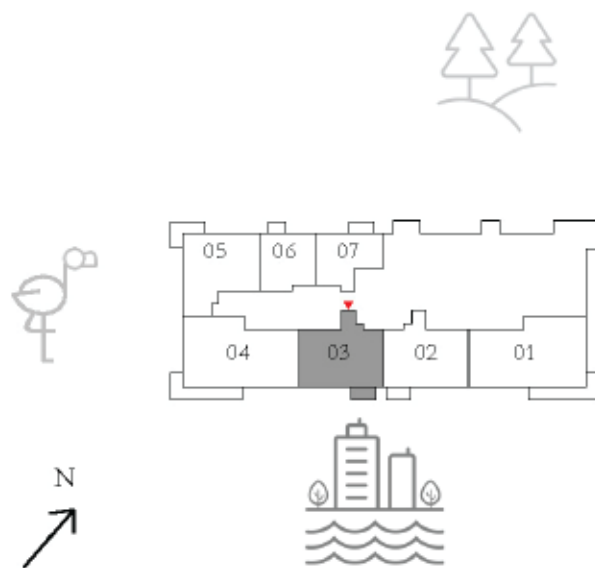
APARTMENTS 2 BEDROOM

UNIT 03 | LEVEL 20

SUITE AREA	993.40 SQ.FT.	92.29 SQ.M.
BALCONY AREA	56.51 SQ.FT.	5.25 SQ.M.
TOTAL AREA	1049.91 SQ.FT.	97.54 SQ.M.

KEY PLAN

KEY SECTION



FLOOR PLAN 1. All dimensions are in imperial and metric, and measured from finish to finish excluding construction tolerances. 2. All materials, dimensions, and drawings are approximate only. 3. Information is subject to change without notice, at developer's absolute discretion. 4. Actual area may vary from the stated area. 5. Drawings not to scale. 6. All images used are for illustrative purposes only and do not represent the actual size, features, specifications, fittings, and furnishings. 7. The developer reserves the right to make revisions / alterations, at it's absolute discretion, without any liability whatsoever.

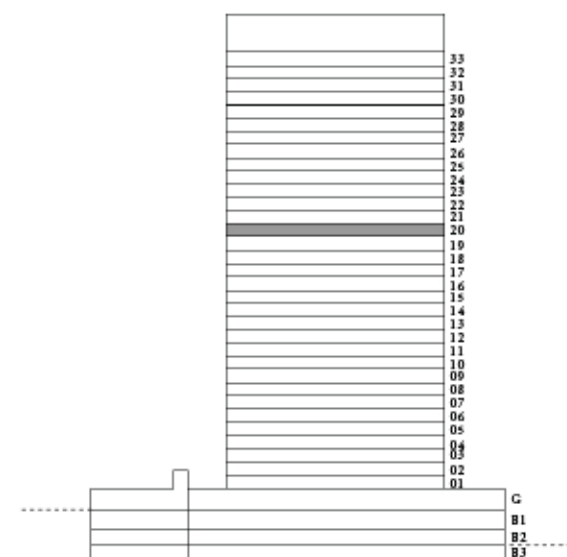
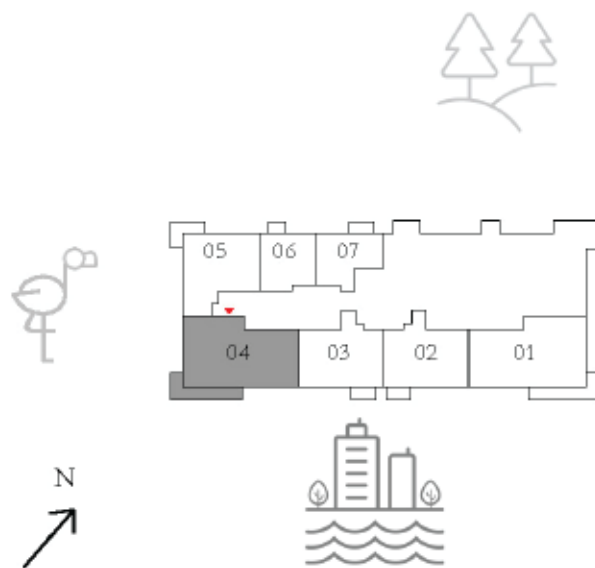
APARTMENTS 3 BEDROOM

UNIT 04 | LEVEL 20

SUITE AREA	1451.62 SQ.FT.	134.86 SQ.M.
BALCONY AREA	202.04 SQ.FT.	18.77 SQ.M.
TOTAL AREA	1653.66 SQ.FT.	153.63 SQ.M.

KEY PLAN

KEY SECTION



FLOOR PLAN 1. All dimensions are in imperial and metric, and measured from finish to finish excluding construction tolerances. 2. All materials, dimensions, and drawings are approximate only. 3. Information is subject to change without notice, at developer's absolute discretion. 4. Actual area may vary from the stated area. 5. Drawings not to scale. 6. All images used are for illustrative purposes only and do not represent the actual size, features, specifications, fittings, and furnishings. 7. The developer reserves the right to make revisions / alterations, at it's absolute discretion, without any liability whatsoever.

PALACE

RESIDENCES - NORTH

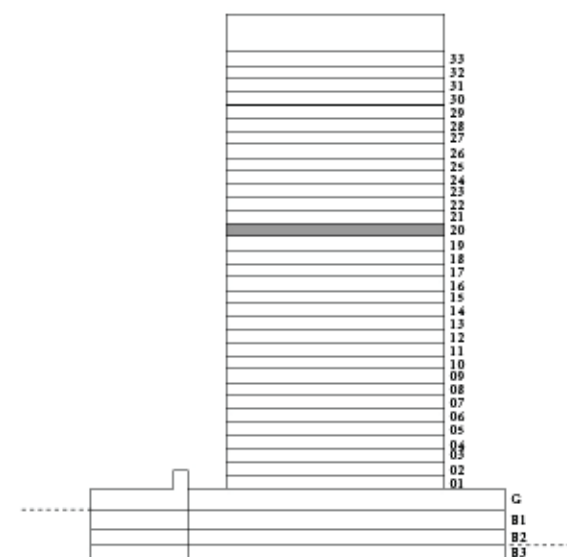
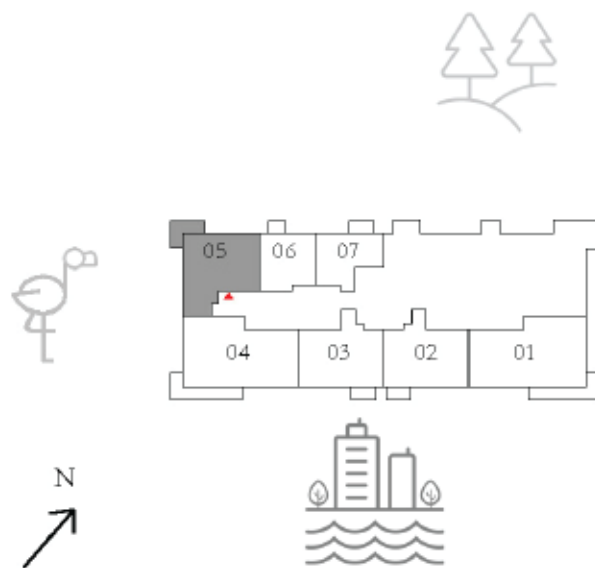
APARTMENTS 2 BEDROOM

UNIT 05 | LEVEL 20

SUITE AREA	982.42 SQ.FT.	91.27 SQ.M.
BALCONY AREA	115.82 SQ.FT.	10.76 SQ.M.
TOTAL AREA	1098.24 SQ.FT.	102.03 SQ.M.

KEY PLAN

KEY SECTION



FLOOR PLAN 1. All dimensions are in imperial and metric, and measured from finish to finish excluding construction tolerances. 2. All materials, dimensions, and drawings are approximate only. 3. Information is subject to change without notice, at developer's absolute discretion. 4. Actual area may vary from the stated area. 5. Drawings not to scale. 6. All images used are for illustrative purposes only and do not represent the actual size, features, specifications, fittings, and furnishings. 7. The developer reserves the right to make revisions / alterations, at it's absolute discretion, without any liability whatsoever.

PALACE

RESIDENCES - NORTH

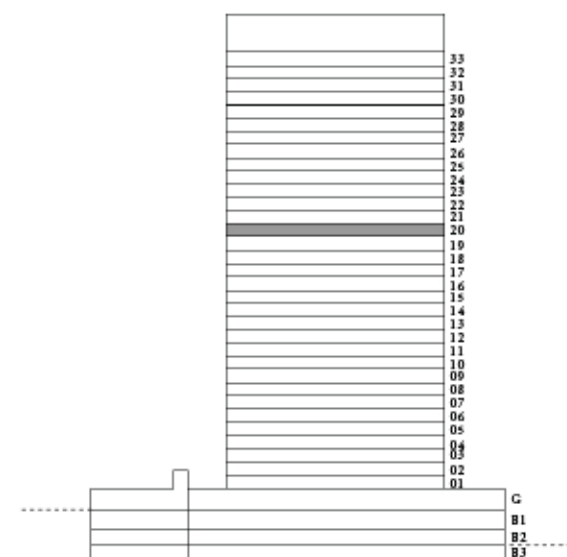
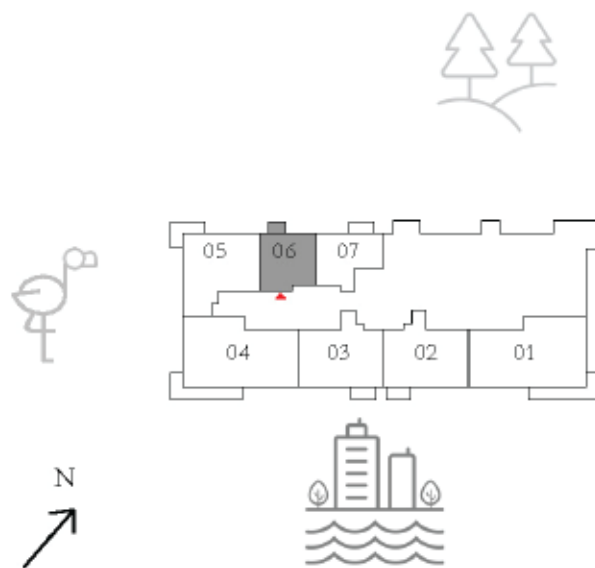
APARTMENTS 1 BEDROOM

UNIT 06 | LEVEL 20

SUITE AREA	601.06 SQ.FT.	55.84 SQ.M.
BALCONY AREA	41.12 SQ.FT.	3.82 SQ.M.
TOTAL AREA	642.18 SQ.FT.	59.66 SQ.M.

KEY PLAN

KEY SECTION



FLOOR PLAN 1. All dimensions are in imperial and metric, and measured from finish to finish excluding construction tolerances. 2. All materials, dimensions, and drawings are approximate only. 3. Information is subject to change without notice, at developer's absolute discretion. 4. Actual area may vary from the stated area. 5. Drawings not to scale. 6. All images used are for illustrative purposes only and do not represent the actual size, features, specifications, fittings, and furnishings. 7. The developer reserves the right to make revisions / alterations, at it's absolute discretion, without any liability whatsoever.

PALACE

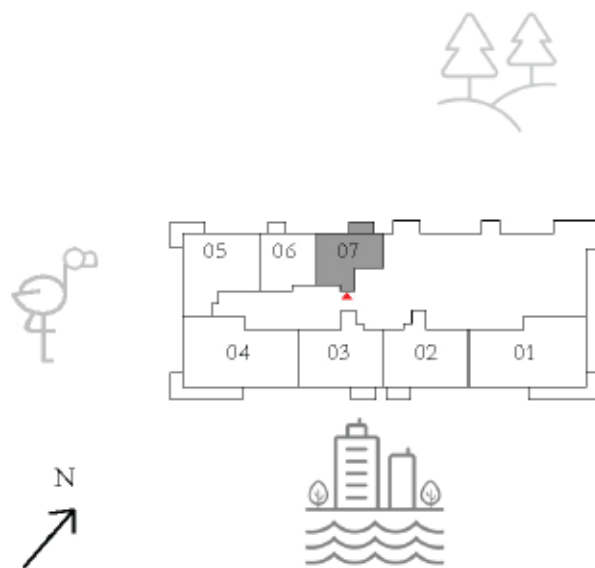
RESIDENCES - NORTH

APARTMENTS 1 BEDROOM

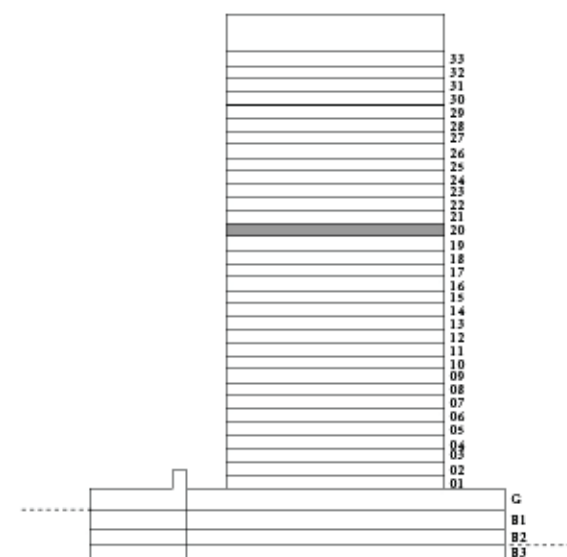
UNIT 07 | LEVEL 20

SUITE AREA	582.22 SQ.FT.	54.09 SQ.M.
BALCONY AREA	56.73 SQ.FT.	5.27 SQ.M.
TOTAL AREA	638.95 SQ.FT.	59.36 SQ.M.

KEY PLAN



KEY SECTION



FLOOR PLAN 1. All dimensions are in imperial and metric, and measured from finish to finish excluding construction tolerances. 2. All materials, dimensions, and drawings are approximate only. 3. Information is subject to change without notice, at developer's absolute discretion. 4. Actual area may vary from the stated area. 5. Drawings not to scale. 6. All images used are for illustrative purposes only and do not represent the actual size, features, specifications, fittings, and furnishings. 7. The developer reserves the right to make revisions / alterations, at it's absolute discretion, without any liability whatsoever.

PALACE

RESIDENCES - NORTH

FOR MORE INFORMATION PLEASE CONTACT



REAL ESTATE

STAY AHEAD, INVEST SMART

📞 +971 55 476 7630
☎️ +971 4 368 7878
✉️ info@afsrealestate.com
🌐 www.afsrealestate.com



DUBRICKS

POSSIBILITIES ARE LIMITLESS

📞 +971 50 674 2020
☎️ +971 4 368 7878
✉️ info@dubricks.com
🌐 www.dubricks.com

EMAAR